

## Activities guide

The following is a quick guide to carrying out certain activities in the marine park.

### Need a permit?

Marine park permits are an important tool for managing Moreton Bay Marine Park. QPWS can place conditions on certain activities, separate conflicting activities, limit the impacts on high-use and/or sensitive areas, collect data and encourage responsible behaviour by marine park users. The zoning plan states activities that can occur without specific permission and those that require a permit. Marine park permits are required for most commercial or high impact activities, including:

- commercial tourism programs
- collecting restricted marine plants or animals
- works considered consistent with the object of the zone
- constructing or installing a jetty, boat ramp or revetment wall
- dredging, material extraction and disposal
- aquaculture operations (not including the addition of feed)
- non-accredited research and educational activities
- vessel charter operations
- operating a hovercraft.

Before undertaking any activity in the marine park, check the zoning plan to see if a permit is required.

Visit [qld.gov.au/environment/parks/permits/marine](http://qld.gov.au/environment/parks/permits/marine)

### Boating

Boating is largely unrestricted in the marine park; but, boat operators must:

- adhere to rules in go slow and no anchoring areas (see designated areas section in this brochure)
- ensure they do not unreasonably disturb shorebirds
- not discharge any waste, including treated or untreated sewage, in marine national park (green) zones.

### Jet skis and other personal watercraft (PWC)

Jet skis are considered vessels and the same rules apply. Operators must:

- adhere to rules in go slow and no anchoring areas (see section on designated areas)
- ensure they do not unreasonably disturb shorebirds.

### Motorised water sports

In go slow areas vessels (including PWCs) cannot undertake motorised water sports. This includes:

- driving a vessel other than in a straight line e.g. weaving, in circles, and surfing down or jumping over waves, swell or wash
- towing a person, such as for waterskiing, parasailing or wakeboarding
- PWC not taking the most reasonable direct route between two places.

### Anchoring time limits

Time limits apply to vessels anchoring throughout the marine park.

A permit is required when anchoring in one area for more than 14 consecutive days or more than 30 days in any period of 60 days. A two-hour limit applies on using public moorings in the marine park.

### Dogs

Dogs must be controlled when near shorebirds so as not to disturb them.

Dogs must remain onboard a vessel in intertidal areas (including beaches) adjacent to all national parks, such as Moreton Island and Bribie Island national parks.

### Artificial reefs

Restrictions apply to activities at some artificial reefs. Refer to [qld.gov.au/marineparks](http://qld.gov.au/marineparks) and click on Moreton Bay.

## Recreational fishing, crabbing, bait gathering and netting

Line fishing and trolling	Allowed in all zones except marine national park (green) zones where it is prohibited. Limited to two lines each and a total of two hooks per person in conservation park (yellow) zones.
Crabbing	Allowed in all zones except marine national park (green) zones where it is prohibited. Limited to four crab pots per person in conservation park (yellow) zones.
Bait gathering (taking by hand or hand-held implement only)	Allowed in all zones except marine national park (green) zones where it is prohibited.
Limited spearfishing (spearfishing that does not include the use of a power-head, firearm, light or underwater breathing apparatus— other than a snorkel)	Allowed in all zones except marine national park (green) zones where it is prohibited. Under other state legislation spearfishing is prohibited in some areas. Contact Department of Agriculture and Fisheries (ph 13 25 23) and your local council with regards to the area you wish to spearfish. Where legislation contradicts the other, the one with higher protection prevails.
Netting	Allowed in all zones except marine national park (green) zones where it is prohibited. Bait netting is the only type of netting allowed in conservation park (yellow) zones.

Examples of **one** hook includes:



▲ single hook



▲ a bait jig (of up to six hooks)



▲ lure with up to three hooks



▲ single-shanked double hook



▲ ganged hook set (of up to six adjoining hooks)



▲ squid jig  
▶ artificial fly (no photo)

### Stowed and secured equipment

When in a zone that prohibits an activity, all equipment used for that activity must be stowed or secured while in, or passing through that zone. For example, because marine national park (green) zones prohibit fishing, all fishing equipment must be in board the vessel and completely out of the water while in the green zone. Fishing rods can be stored in rod holders and hooks secured to the rod or handline.

### Collecting

Depending on the type and quantity of plants or animals to be collected, a permit may be required. Collecting is prohibited in the marine national park (green) zones. Taking coral (live or dead) is prohibited in all zones of the marine park without a permit.

### Removal of material

It is an offence to remove almost any material (for example, rock and sand) from the marine park without permission. Similarly, depositing any material without permission is also an offence.

## Rubbish? Take it home

Rubbish discarded on land and in the rivers and ocean threatens Moreton Bay Marine Park's wildlife. Remnants of fishing gear such as nets, line, hooks, floats, buoys and domestic rubbish, particularly plastics, which cause serious injuries and death from infections, amputations, blocked gut, choking and drowning.



Ensure you carefully dispose of your rubbish and try to use environmentally friendly products.

## Penalties apply

Be warned! While most people do the right thing, you can and will be fined for breaches of the zoning plan, *Marine Parks Act 2004* or Marine Park Regulations 2017. On-the-spot fines apply.

Penalties apply and are not limited to:

- travelling on the plane in go slow areas.
- fishing or collecting in a green zone.





# Marine Park Guide

## Moreton Bay Marine Park



### Protect our shorebirds



Some 4,000 resident shorebirds live and breed around the marine park's shorelines, and more than 40,000 migratory shorebirds visit each year. Moreton Bay is an internationally-recognised Ramsar site and is managed to protect these birds and their habitats.

Shorebirds mustnot be unreasonably disturbed, by vessels, vehicles, dogs or people's activities. If a shorebird is put to flight this could be considered to be unreasonable disturbance. On-the-spot fines may apply.

### Whale watching

From around May to November each year, whales are more frequently seen in the marine park. To ensure the whales' safety, and that of the people around them, strict regulations apply.

**Know your zones and designated areas**, their boundaries and what you can do where. Know how to behave around whales and shorebirds. Use these products to guide and inform you:

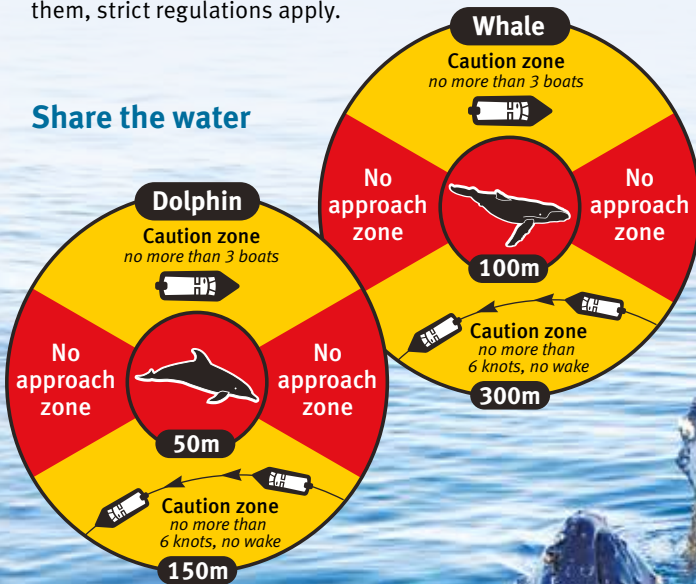
- Moreton Bay Marine Park user guide details the boundaries of the marine national park (green), conservation park (yellow) and habitat protection (dark blue) zones and some designated areas.
- For exact boundaries refer to the Marine Parks (Moreton Bay) Zoning Plan 2008.
- Signs at boat ramps act as a reminder before you head out on the water.

Visit us at [qld.gov.au/marineparks](http://qld.gov.au/marineparks) and click on Moreton Bay for more information about watching whales and other wildlife, shorebird information and appropriate ways to conduct activities.

Involve yourself and others in caring for Moreton Bay Marine Park. Report illegal activity, such as fishing in a green zone and stranded marine animals.

- Report illegal activity: ph 13 QGOV (13 74 68).
- Report stranded marine animals: ph 1300 ANIMAL (1300 264 625).

### Share the water



### You are a part of Moreton Bay Marine Park

The only way to secure Moreton Bay Marine Park's future is by—governments, communities and individuals working together—everyone making their contribution.



Photos: © Dorothy Pashniak (Shorebird); © Amanda Delaforce (whales); Adam Creed (right)



# Our bay—Our future

Moreton Bay Marine Park is a truly extraordinary area. It is home to a vast array of wildlife, sustains a significant proportion of Queensland's economy and its spectacular seascapes provide a popular backdrop for people in South East Queensland to play and relax. Its future lies in our hands—it's our bay, our future.

## It's a valuable place

Moreton Bay is one of the largest estuarine bays in Australia and lies in an 'overlap zone' where tropical and temperate species mix. Over 1000 species of fish share the waters with six of the world's seven species of marine turtle, together with a number of other threatened species including dugong and grey nurse sharks. A range of industries in Moreton Bay contribute significantly to Queensland's economy, including shipping, tourism, commercial fishing, recreational boating and fishing, diving and aquaculture.

## It's about biodiversity

Moreton Bay Marine Park has a rich and wide variety of life meaning it has high biodiversity. It is this biodiversity—the variety of species, habitats and ecosystems, and the processes that sustain them—that must be maintained to make sure the marine park is healthy and resilient into the future.

## Managing the marine park

Moreton Bay Marine Park was first declared in 1993 to protect its unique values and high biodiversity while still allowing people to use it. The marine park covers 3400km<sup>2</sup> and stretches 125km from Caloundra to the Gold Coast. It takes in most of the bay's tidal waters, including many river estuaries, and extends seawards to the limit of Queensland waters. The landward boundary is generally the line of highest astronomical tide.

Queensland Parks and Wildlife Service (QPWS) manages the marine park as a multiple-use marine protected area. This approach recognises that people use and value marine park resources in many different ways.

Marine park management aims to ensure Moreton Bay remains a diverse, resilient and productive ecological system that can be enjoyed and accessed in a sustainable way. Marine parks, like Moreton Bay, that include green (no take) zones have been proven to help conserve marine biodiversity.

## Ongoing monitoring

To test the effectiveness of the zoning plan, QPWS has partnered with several leading research and monitoring organisations to conduct a rigorous five-year monitoring program.

## Traditional Owners

Traditional Owners have an important spiritual and cultural connection with Moreton Bay. They have rights and interests over land and sea country within the marine park, which includes rights for fishing and hunting. QPWS works with Traditional Owners on the management arrangements for the traditional use of resources within the marine park.

## Zoning

Zoning is one of several tools QPWS uses to manage different activities in the marine park and to separate potentially conflicting uses, while maintaining the park's unique biodiversity.

The Marine Parks (Moreton Bay) Zoning Plan 2008 sets out the zones and other special management requirements in the marine park. There are four zone types in Moreton Bay Marine Park (see map).

### Marine national park zone (16%)

Like a national park in the water, these areas are 'look but don't take' areas of high conservation value. Anyone can enter and undertake activities such as boating, snorkelling and sailing. All forms of take (fishing, collecting or extracting) are prohibited.

### Conservation park zone (8%)

Allows a range of recreational and commercial uses. Limited fishing and crabbing can occur but activities that might harm or interfere with an area's habitat and wildlife are prohibited.

### Habitat protection zone (30%)

Protects sensitive habitats by keeping them free from potentially damaging activities. No trawling can occur in these zones.

### General use zone (46%)

Provides for conservation while allowing a range of activities to occur, including trawling.

## Designated areas

Designated areas overlap zones and are used to manage issues that occur at specific locations. For example, go slow areas for turtle and dugong reduce boat strike in areas where turtles and dugong feed and rest. The rules applying in designated areas are in addition to zoning rules, not instead of them.

The nine designated areas in Moreton Bay Marine Park are:

### Go slow areas for turtles and dugong

Boat strikes, regardless of the size or type of vessel, are a major threat to turtles and dugong in Moreton Bay. Turtles and dugong in the marine park are threatened species, meaning their population numbers have dropped to a concerning level and need special management.

Research indicates that the go slow areas (introduced in 1997) are helping to reduce the incidence of boat strike in the marine park.

These go slow areas are (see map):

- Tangalooma Wrecks north to Cowan Cowan
- Moreton Banks north to Tangalooma Point
- Amity Banks
- north-eastern to north-western side of Peel Island
- south of Blaksley Anchorage, encompassing Price Anchorage and extending further south
- east of Lamb Island.



Boatstrike victims rarely survive.





To address the specific issue of larger vessels striking dugong in southern Moreton Bay, there are four additional go slow areas for turtles and dugong. These areas specifically relate to vessels greater than 8m in length where they are restricted to a maximum speed of 10 knots.

These areas are (see map):

- the entrance to Weinam Creek
- between Garden and Macleay islands
- Karragarra Channel (The W's)
- Krummel Passage.

## Go slow areas for natural values

Go slow areas for natural values aim to protect the natural integrity of the location. They provide an opportunity for all marine park users to appreciate and enjoy the relatively undisturbed values and beauty of the area without the interruption and impacts of fast moving vessels.

The seven go slow areas for natural values are designated over some marine national park (green) zones (MNPs).

The areas are (see map):

- Westaways Creek (MNP01)
- Tripcony Bight—Long Island (MNP02) (excluding the marked navigation channel)
- Hays Inlet (MNP11)
- Willes Island (MNP29)
- Swan Bay—Never Never Creek (MNP31)
- McCoys Creek (MNP33)
- Coombabah Lake (MNP34).

## Important

In go slow areas for turtles and dugong and go slow areas for natural values:

- all vessels must travel off-the-plane
- all vessels must not undertake motorised water sports (see definition under activities guide).

In go slow areas for vessels greater than 8m:

- a maximum speed limit of 10 knots applies.

## No anchoring areas

No anchoring areas help to protect sensitive reef habitats. Anchoring is prohibited in these areas, which are also marine national park (green) zones. Public moorings are available on a 'first come best placed' basis and a 2hr time limit applies. The no anchoring areas are (see map):

- Flat Rock (MNP19)
- Flinders Reef (MNP04)
- Myora Reef (MNP22).

## Grey nurse shark areas

The grey nurse shark is one of Australia's most endangered shark species. Three grey nurse shark areas, within marine national park (green) zones, place restrictions on diving and fishing activities. These areas are (see map):

- Cherubs Cave and Henderson Rock (both in MNP10)
- Flat Rock (same boundary as MNP19).

## Mooring areas

Mooring areas allow for long-term moorings to be installed. Specific conditions must be met and approval is required from Maritime Safety Queensland. The mooring areas are not shown overleaf but are available at [qld.gov.au/marineparks](http://qld.gov.au/marineparks) and click on Moreton Bay under designated areas.

## Dredging, disposal and works areas

Detailed information about these designated areas can be found by searching for 'Designated areas' on [qld.gov.au/marineparks](http://qld.gov.au/marineparks) and click on Moreton Bay.

### Disclaimer

While this visitor guide has been prepared with care, readers are advised that legal requirements are contained in the Marine Parks (Moreton Bay) Zoning Plan 2008. This legislation should be read in conjunction with the *Marine Parks Act 2004*, and *Marine Parks Regulation 2017*. Commercial operators in particular should familiarise themselves, their employees and their agents with the zoning plan, *Fisheries Act 1994*, *Fisheries Regulation 2008* and relevant legislation. Copies are available from [legislation.qld.gov.au](http://legislation.qld.gov.au). Neither the Queensland Government nor QPWS accepts liability for any decisions or any actions taken on the basis of information contained or not contained in this document.

## Further information

### Marine park zoning maps and user guide

Moreton Bay Marine Park surrounds Moreton Island. For information about marine park rules and permitted activities, visit [qld.gov.au/marineparks](http://qld.gov.au/marineparks) and click on Moreton Bay.

### Marine animal strandings

Contact 1300 ANIMAL (1300 264 625) to report any injured or dead dugong, turtles, whales or dolphins.

### For fisheries information

Contact Department of Agriculture and Fisheries 13 25 23 or visit [daf.qld.gov.au/fisheries](http://daf.qld.gov.au/fisheries)

Or to report:

- illegal fishing activity in green zones contact FISHWATCH 1800 017 116, and
- other illegal activity contact 13 QGOV (13 74 68).

## Connect with Queensland National Parks

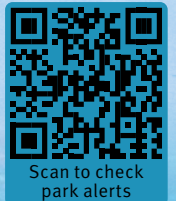
 [qld.gov.au/NationalParks](http://qld.gov.au/NationalParks)

 [qld.gov.au/Camping](http://qld.gov.au/Camping)

 [qldnationalparks](https://www.facebook.com/qldnationalparks)

 [@QldParks](https://www.instagram.com/QldParks); [#QldParks](https://www.instagram.com/QldParks)

For help planning your holiday, visit [queensland.com](http://queensland.com) or [visitbrisbane.com.au](http://visitbrisbane.com.au)



Scan to check park alerts



©State of Queensland 2023.  
Queensland Parks and Wildlife Service,  
Department of Environment and Science.  
BP1050 March 2023.  
Printed on eco-friendly paper to save energy and resources.  
Cover photo: Adam Creed © Qld Govt (front); © Doug Perrine/SeaPics.com (back).  
All other photos: © Qld Govt unless otherwise credited.

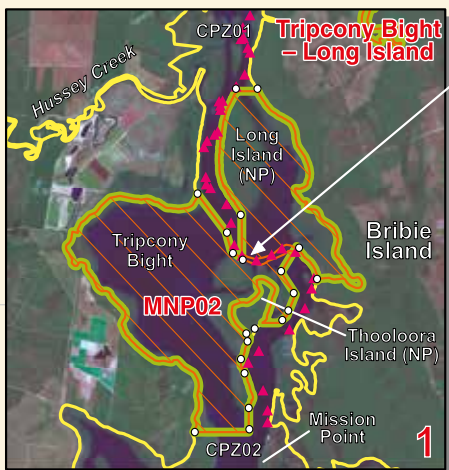
153°0'E

153°10'E

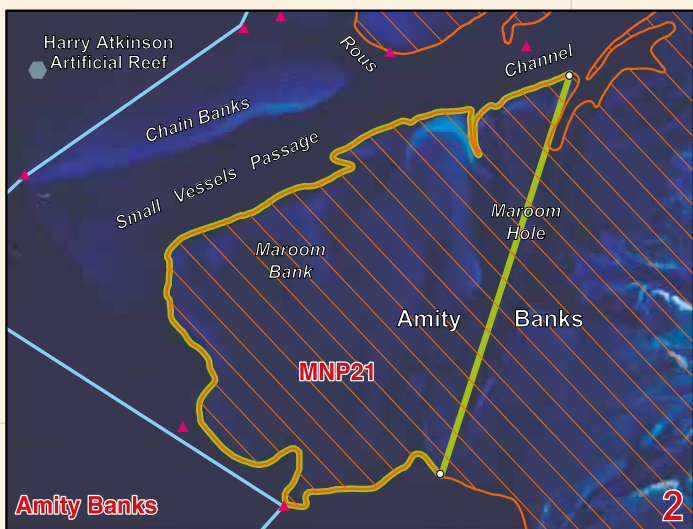
26°50'S

27°0'S

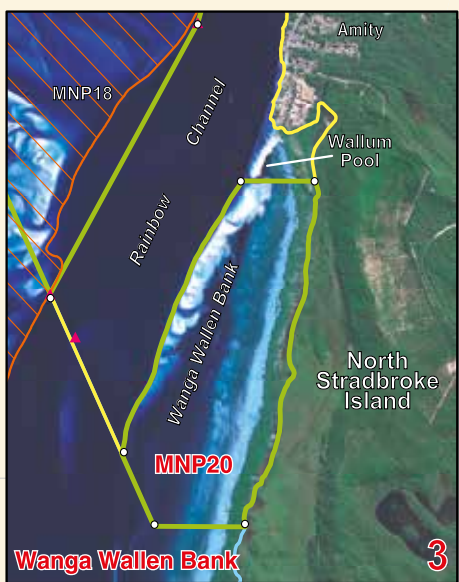
27°10'S



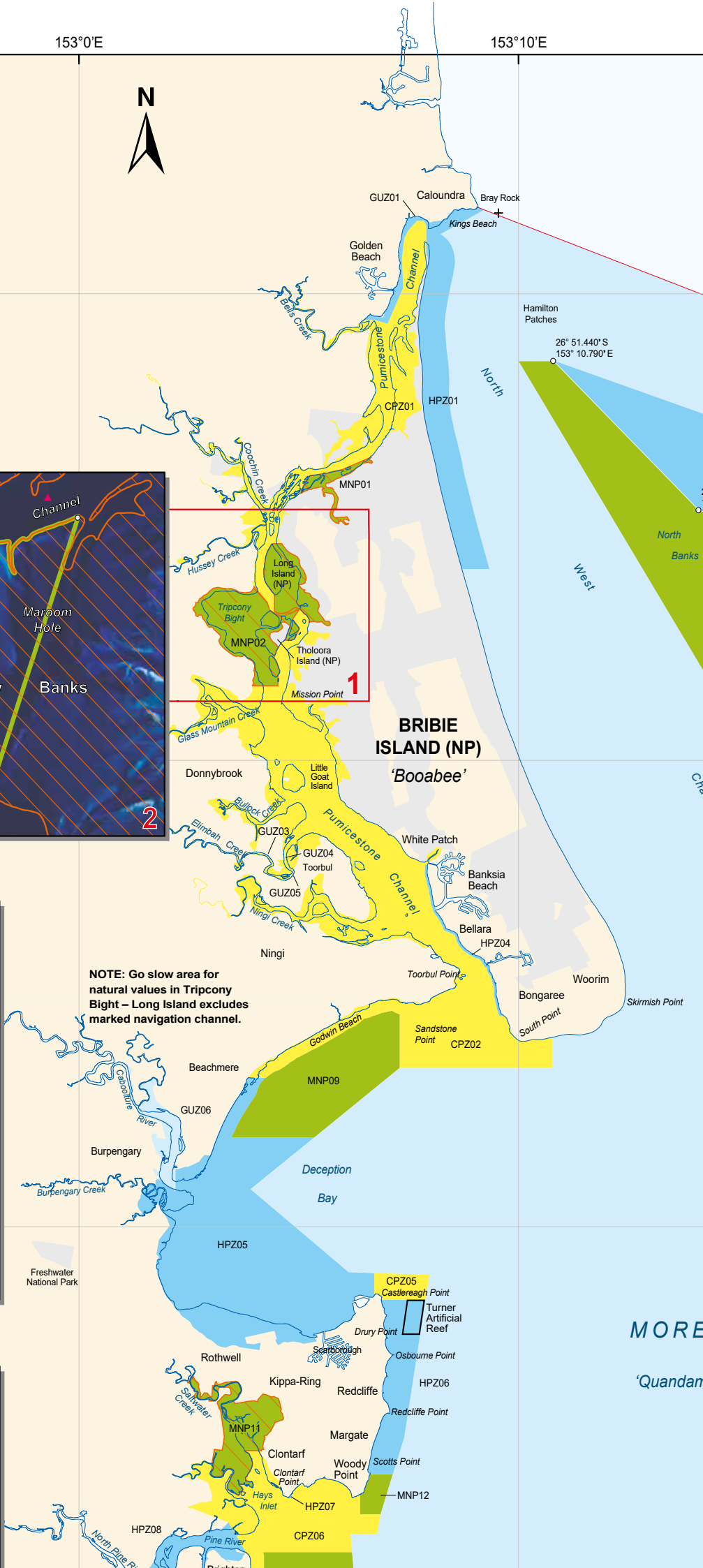
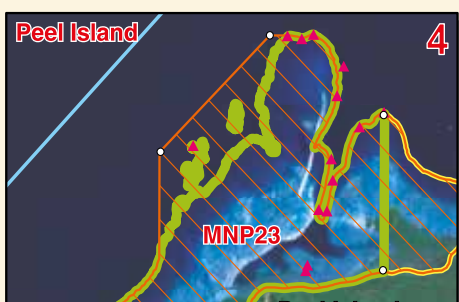
0 1 2 3 4 Kilometres



0 1 2 3 4 Kilometres



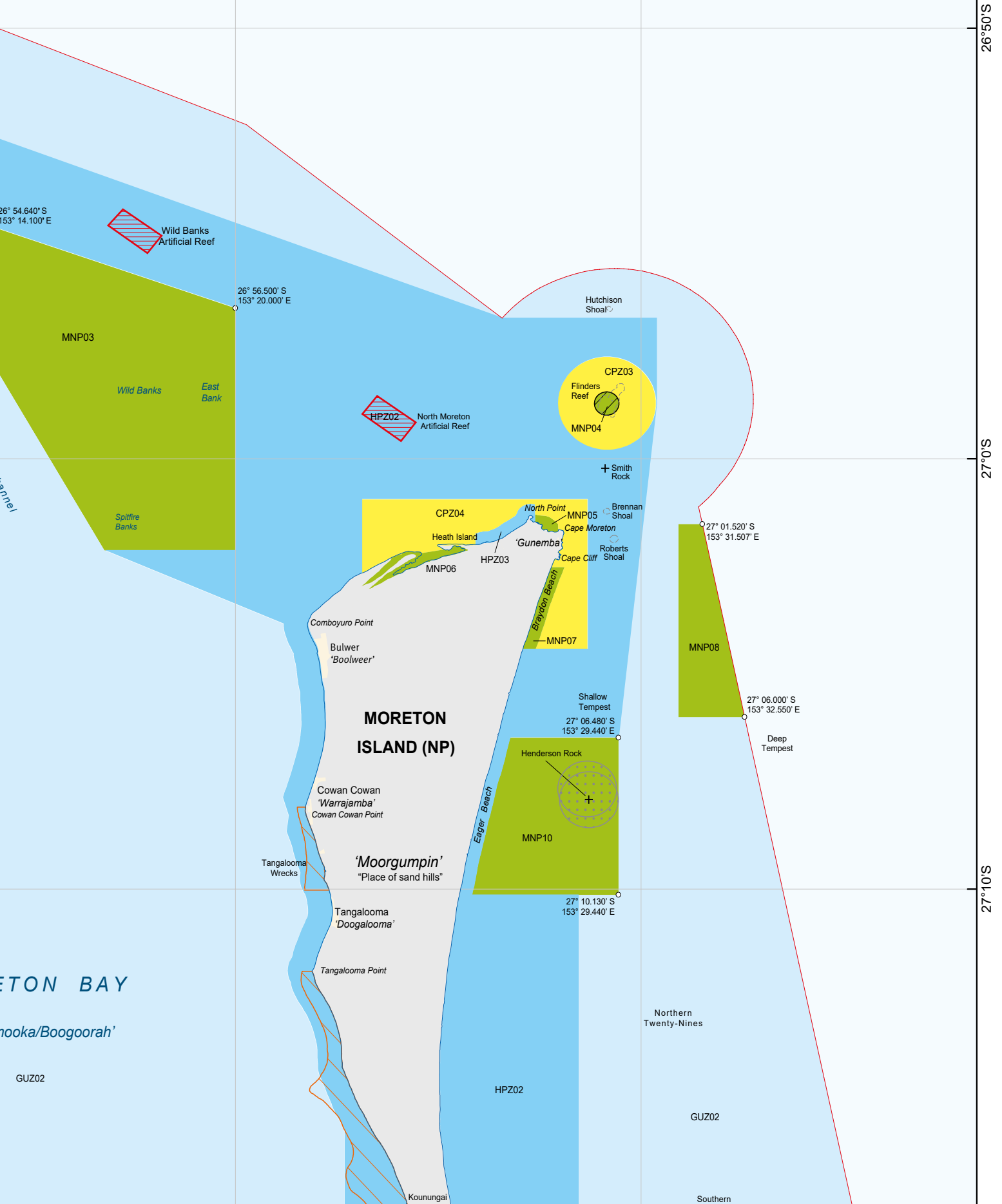
0 0.75 1.5 2.25 3 Kilometres



NOTE: Go slow area for natural values in Tripcony Bight - Long Island excludes marked navigation channel.

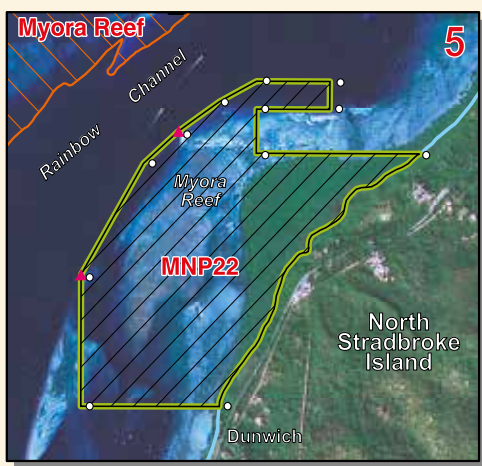
MORE  
'Quandam

# Moreton Bay Marine Park

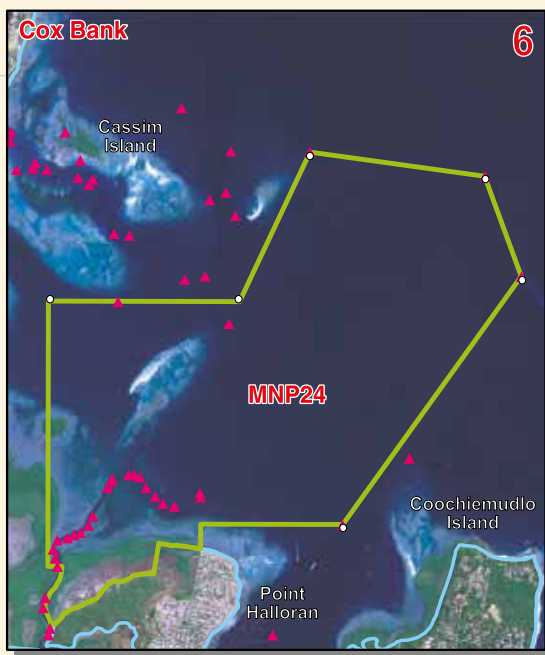




27°20'S



27°30'S



27°40'S



27°50'S

**Disclaimer**

The purpose of this map is to help interpret the Marine Parks (Moreton Bay) Zoning Plan 2008. Zone and designated area boundaries are indicative only. While every care has been taken to illustrate zone and designated area boundaries as accurately as possible, users must refer to Schedules 1 & 2 of the Marine Park (Moreton Bay) Zoning Plan 2008 for precise boundary descriptions.

While every care is taken to ensure the accuracy of this product the Queensland Government makes no representations or warranties about its accuracy, reliability, completeness or suitability for any particular purpose. The Queensland Government disclaims all responsibility and all liability (including without limitation, liability in negligence) for all expenses, losses, damages (including indirect or consequential damage) and costs which might be incurred as a result of the product being inaccurate or incomplete in any way and for any reason.

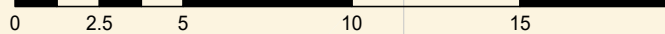
Hydrographic and maritime information is the copyright of the State of Queensland and is used under licence with the permission of Maritime Safety Queensland. All rights reserved. This map includes data from SPOT 5 satellite © CNES, 2011

© Copyright State of Queensland 2018.

**Legend**

- Labelled coordinate
- + Rock
- ▲ Navigation mark
- Marine park boundary
- Coastline
- ☁ Reef / shoal
- National park
- Designated areas**
- ▨ Go slow area for turtles and dugong  
Go slow area for natural values
- ▩ Go slow area (vessels >8 m)
- ▤ No anchoring area
- ▧ Grey nurse shark area
- ▭ Artificial Reef. Restrictions apply.  
Search for Moreton Bay artificial reefs at [www.des.qld.gov.au](http://www.des.qld.gov.au)
- ▭ Turner Artificial Reef. No restrictions apply.

**Main Map Scale Bar**



**What can I do in each zone?**

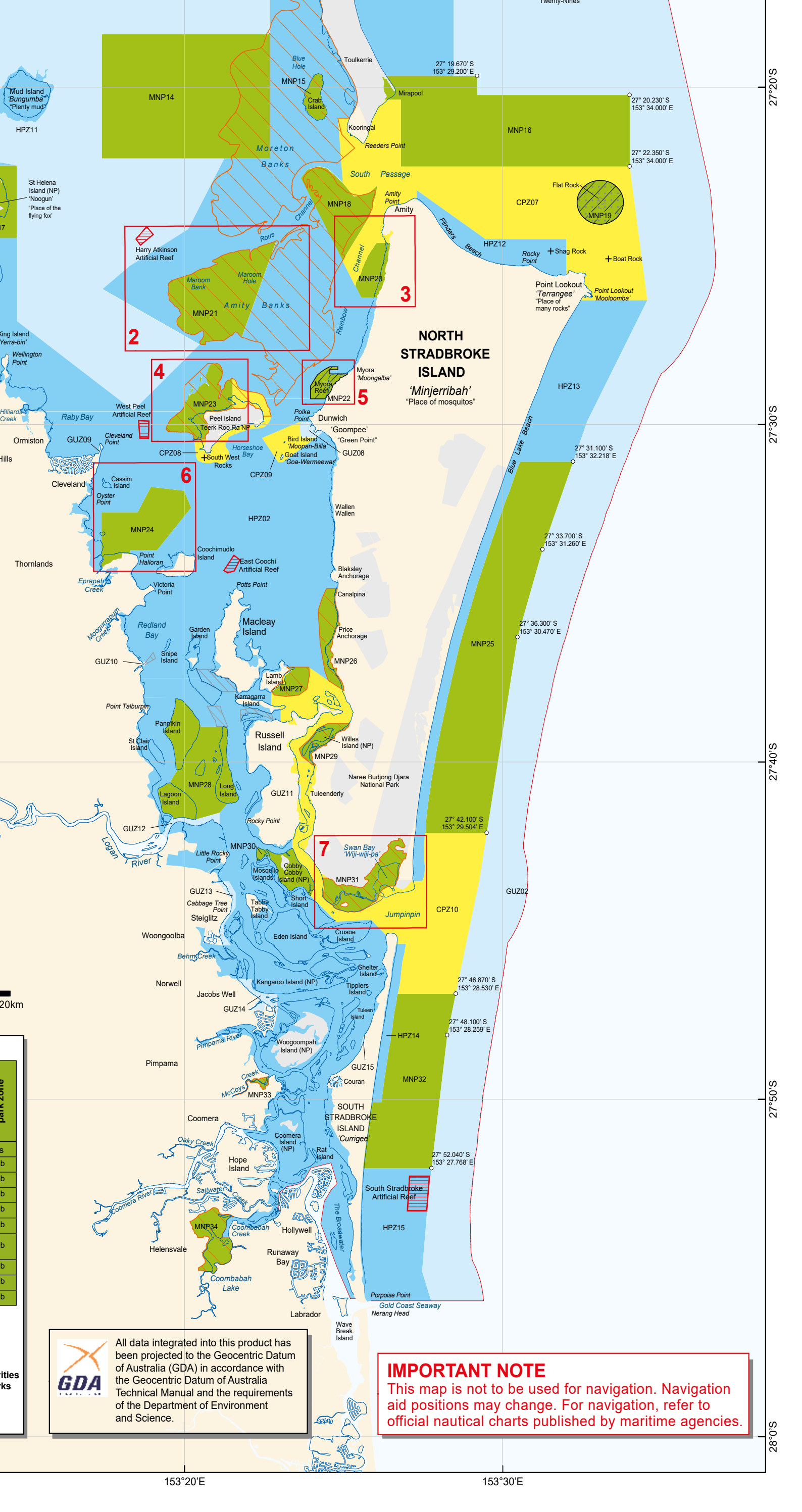
Entry and use guide	General use zone	Habitat protection zone	Conservation park zone	Marine national park zone
Boating	Yes	Yes	Yes	Yes
Line fishing	Yes	Yes	Yes <sup>a</sup>	No
Crabbing	Yes	Yes	Yes <sup>c</sup>	No
Trolling	Yes	Yes	Yes	No
Bait gathering	Yes	Yes	Yes	No
Bait netting	Yes	Yes	Yes	No
Netting (other than bait netting)	Yes	Yes	No <sup>b</sup>	No
Limited spearfishing	Yes	Yes	Yes	No
Limited collecting	Yes <sup>d</sup>	Yes <sup>d</sup>	Yes <sup>d</sup>	No
Trawling	Yes	No <sup>b</sup>	No <sup>b</sup>	No

**Notes:**  
a: Up to two lines and a maximum of two hooks per angler  
b: All equipment must be stowed or secured  
c: Maximum of four pots per person  
d: No coral. Limits apply to species and equipment used  
**This is not an exhaustive list. For full details about the activities allowed in Moreton Bay Marine Park, refer to the Marine Park (Moreton Bay) Zoning Plan 2008.**  
+ Pumicestone Passage commercial fishing closure under Fisheries Act 1994 remains.

28°0'S

153° 0'E

153° 10'E



**NORTH STRADBROKE ISLAND**  
*'Minjerribah'*  
 "Place of mosquitos"

**2**

Harry Atkinson Artificial Reef

MNP21

Amity Banks

**3**

MNP20

Channel

**4**

MNP23

Peel Island

Teerk Roo Ra NP

**5**

Myora Reef

MNP22

*'Moongalba'*

**6**

MNP24

Point Halloran

**7**

Swan Bay

*'Wiji-wiji-pa'*

MNP31

Jumpinpin



All data integrated into this product has been projected to the Geocentric Datum of Australia (GDA) in accordance with the Geocentric Datum of Australia Technical Manual and the requirements of the Department of Environment and Science.

**IMPORTANT NOTE**  
 This map is not to be used for navigation. Navigation aid positions may change. For navigation, refer to official nautical charts published by maritime agencies.