

Fishing quick guide

- Marine national park zones (green zones) are “look but don’t take” zones; fishing, crabbing and collecting are prohibited. All apparatus for fishing must be stowed and secured when in a marine national park zone.
- Trolling from a vessel under power using three lines or rods per person with a combined total of six hooks/lures is allowed in the buffer zone (olive-green zone—pelagic species only) and conservation park zone (yellow zone). All others forms of fishing are prohibited in the buffer zone. Other forms of line fishing in the conservation park zone are limited to one line/rod per person and one hook/lure only.
- Three lines or rods per person with a combined total of six hooks/lures are allowed in Great Sandy designated area (which incorporates Baffle Creek, the Elliot, Burrum and Mary rivers, Great Sandy Strait and Tin Can Bay Inlet), habitat protection zones and general use zones (dark and light blue) for all forms of line fishing.
- A hook includes a single-shanked double or treble hook, artificial lure with not more than three hooks, artificial fly, jig for taking squid, ganged hook set of not more than six hooks and a bait jig that is a hook or group of hooks of not more than six hooks, of a size between number 1 and 12 inclusive or an equivalent size.

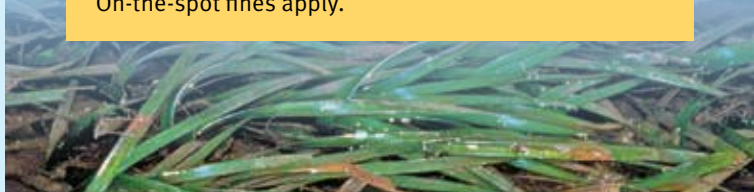
Penalties apply and are not limited to:

Travelling on the plane in “go slow” areas is prohibited. On-the-spot fines apply.

Fishing or collecting is prohibited in a green zone. On-the-spot fines apply.

Limited spear fishing


Limited spearfishing (by snorkel only) is permitted in general use, habitat protection and conservation park zones. Spearfishing on underwater breathing apparatus or using a power head is prohibited. On-the-spot fines apply.



Further information

 des.qld.gov.au/parks/great-sandy-marine/

 qld.gov.au/Camping

 qld.gov.au/ParkAlerts
(access, closures and conditions)

 [qldnationalparks](https://www.facebook.com/qldnationalparks)

 [#QldParks](https://www.instagram.com/QldParks)

Report any sick, injured or dead marine mammals or marine turtles by phoning 1300 130 372.

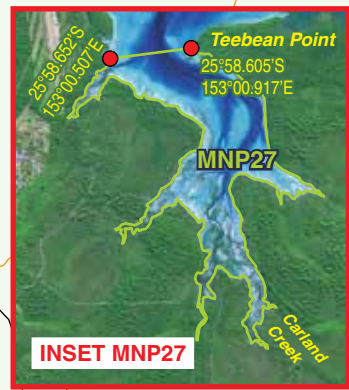
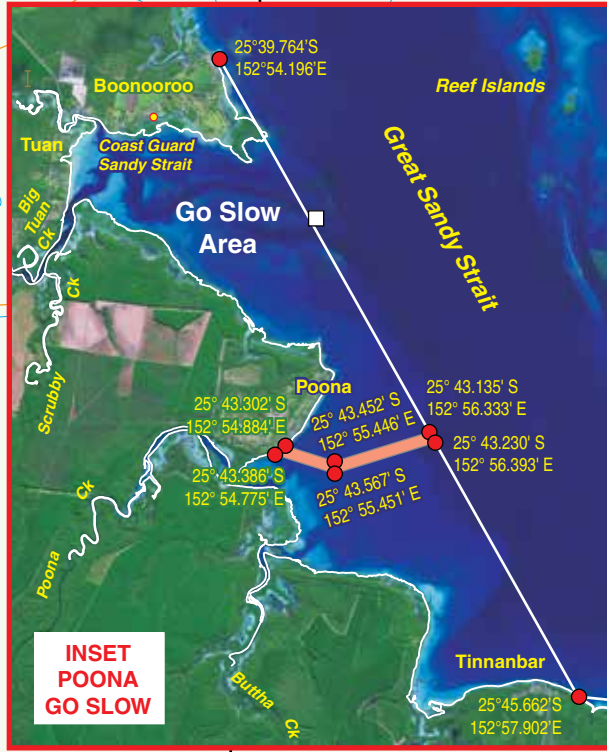
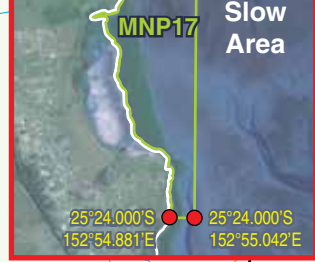
This brochure is also available online at qld.gov.au/ParkBrochures



Scan for GSMP visitor guide

Statement of limitation

The purpose of this map is to help interpret the **Marine Parks (Great Sandy) Zoning Plan 2017**. The zone and designated area boundaries shown on the map are indicative only, and any depiction of highest astronomical tide on this map is taken as best estimate at February 2008. The Department of Environment and Science makes no representation or warranties about its accuracy, reliability, completeness or suitability for any particular purpose. A selection of marine national park zones and go slow areas are detailed in the inset maps for reader ease. Precise boundary descriptions and more information on zones and designated areas can be found in Schedule 3 (Great Sandy Marine Park) of the *Marine Parks (Declaration) Regulation 2006* and *Marine Park (Great Sandy) Zoning Plan 2017* or online at des.qld.gov.au/marine-parks/index.html



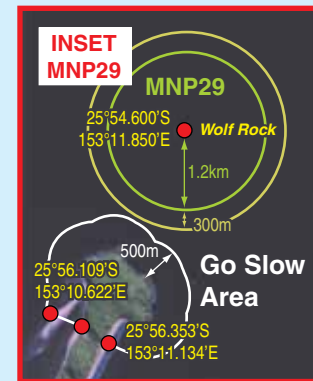
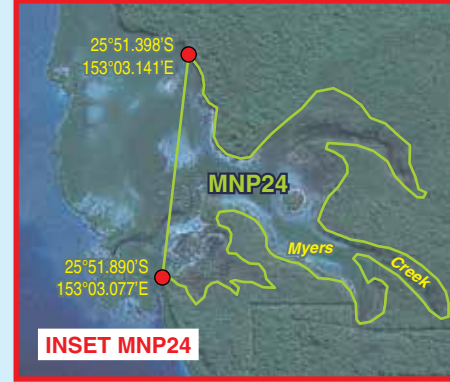
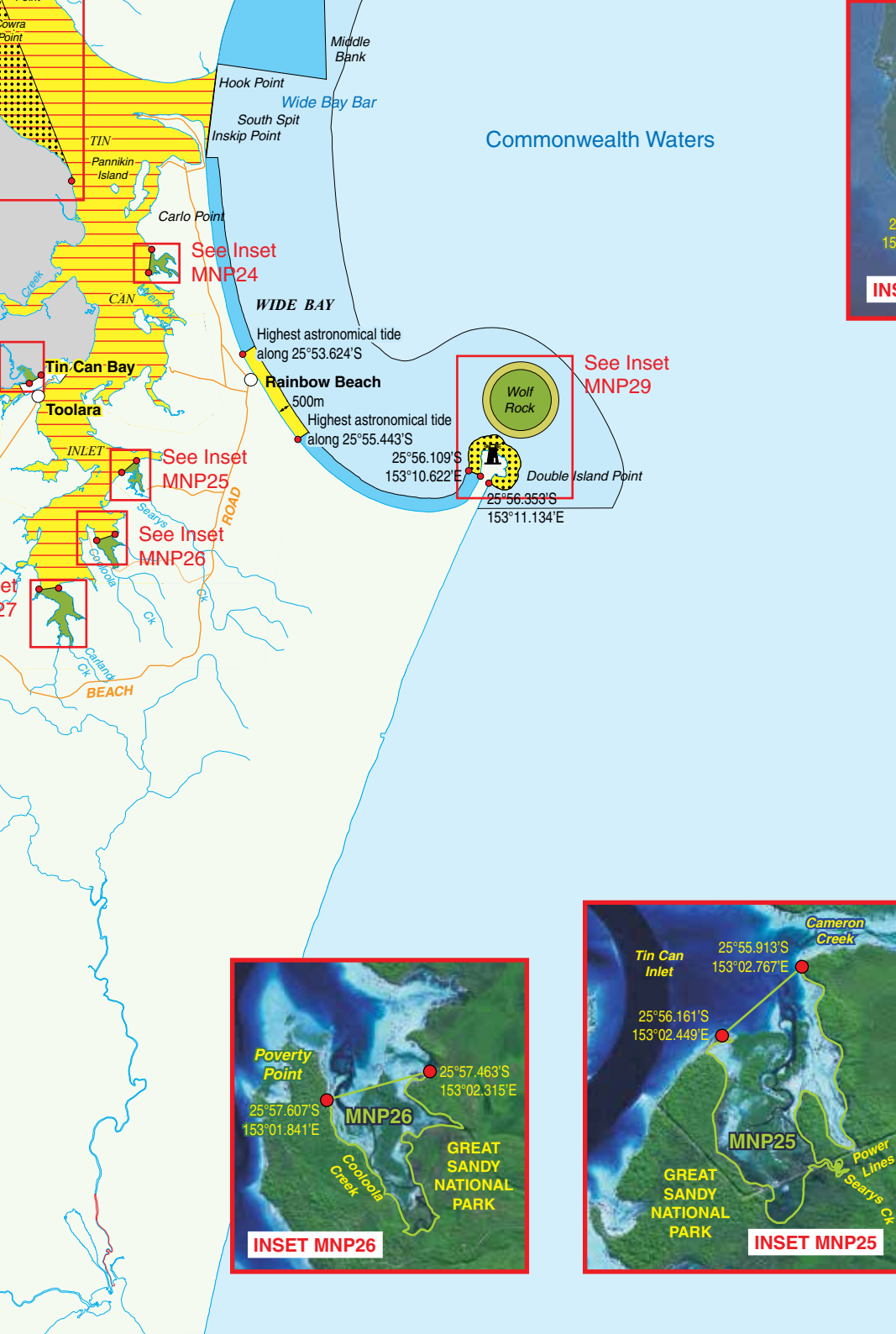
Map datum: GDA94, WGS84 compatible
Includes data from Spot5 satellite © CNES, 2007





Boaties quick guide

Great Sandy Marine Park



- Legend**
- Commonwealth waters
 - Coordinate point
 - Navigational aid
 - North cardinal mark
 - Town
 - Weir
 - Lighthouse
 - Highway
 - Sealed road
 - Railway
 - Transit lane
 - Artificial reef



Printed Sept 2016
 UPDATED
 Sept 2020

Map datum: GDA94, WGS84 compatible
Includes data from Spot5
satellite © CNES, 2007



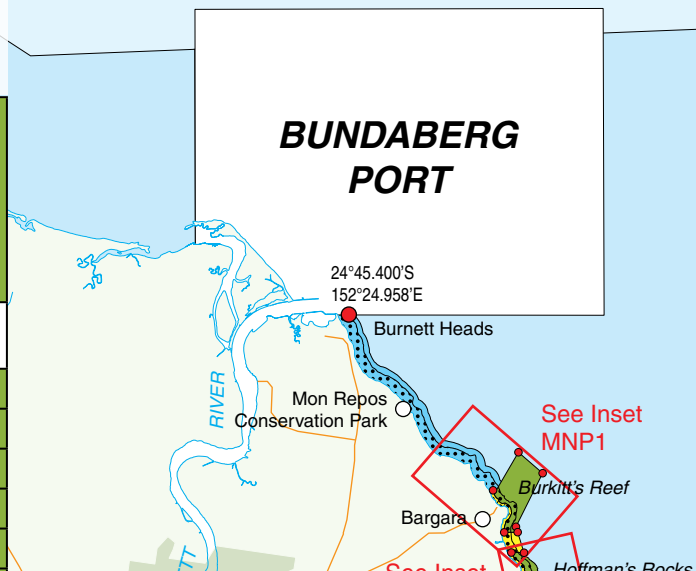
GREAT BARRIER REEF MARINE PARK

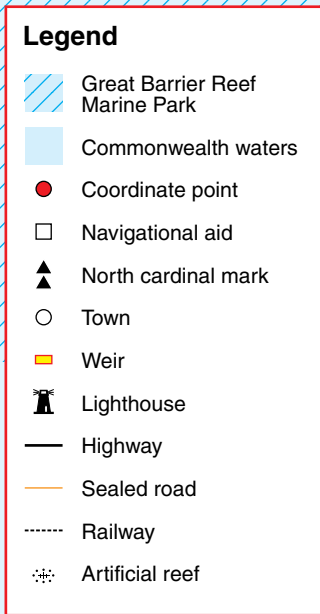
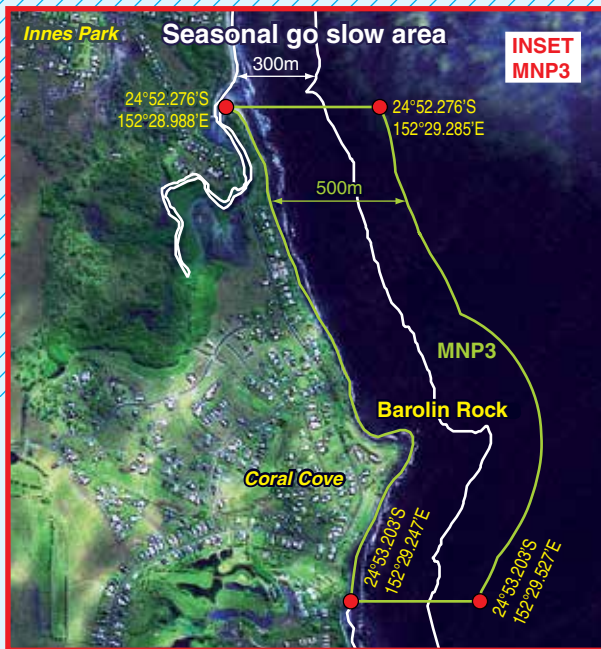


Great Sandy Marine Park—Zones Provisions Table

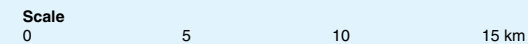
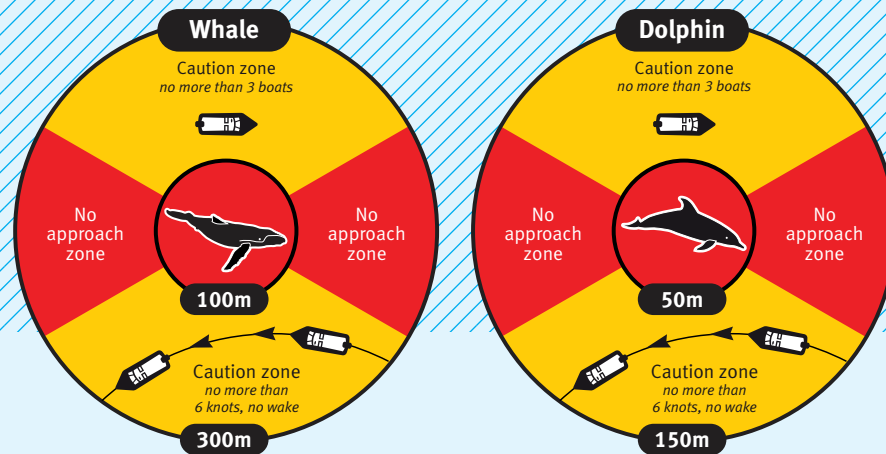
Entry and use provisions	General use zone	Habitat protection zone	Conservation park zone	Buffer zone	Marine national park zone
FISHERIES, FISHING AND COLLECTING ACTIVITIES					
Bait netting	Yes ⁹	Yes ⁹	Yes ⁹	No ^A	No ^A
Aquaculture	Permit	Permit	Permit	No ^A	No ^A
Crabbing	Yes ⁹	Yes ⁹	Yes ^{2,9}	No ^A	No ^A
Bait gathering	Yes ⁹	Yes ⁹	Yes ⁹	No ^A	No ^A
Line fishing	Yes ^{4,9}	Yes ^{4,9}	Yes ^{5,9}	No ^A	No ^A

BUNDABERG PORT

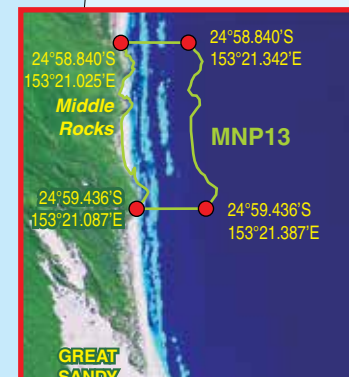
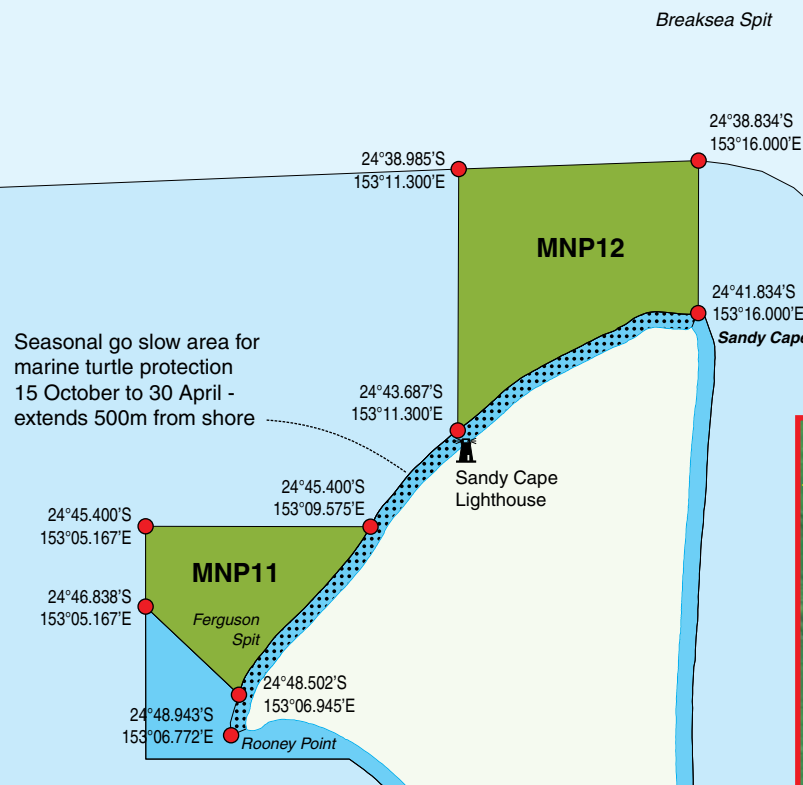
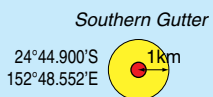




Share the water



Commonwealth Waters



Limited collecting	Yes ^{3,9}	Yes ^{3,9}	Yes ^{3,9}	No ^A	No ^A
Limited spearfishing (snorkel only)	Yes ⁹	Yes ⁹	Yes ⁹	No ^A	No ^A
Traditional use of marine resources	Yes ⁶	Yes ⁶	Yes ⁶	Yes ⁶	Yes ⁶
Trolling	Yes ^{4,9}	Yes ^{4,9}	Yes ^{4,9}	Yes ^{4,7,9}	No ^A
Commercial netting (other than bait netting)	Yes ⁹	Yes ⁹	No ^{8,9}	No ^A	No ^A
Harvest fishing for aquarium fish, coral and beachworm	Permit ¹	Permit ¹	Permit	No ^A	No ^A
Harvest fishing for sea cucumber, trochus, tropical rock lobster	Permit ¹	Permit ¹	No	No ^A	No ^A
Trawling	Yes ⁹	No	No	No ^A	No ^A



OTHER ACTIVITIES					
Boating, diving, photography	Yes	Yes	Yes	Yes	Yes
Research (other than limited impact)	Permit	Permit	Permit	Permit	Permit
Shipping (other than in a designated shipping area)	Yes	Permit	Permit	Permit	Permit
Tourism program	Permit	Permit	Permit	Permit	Permit

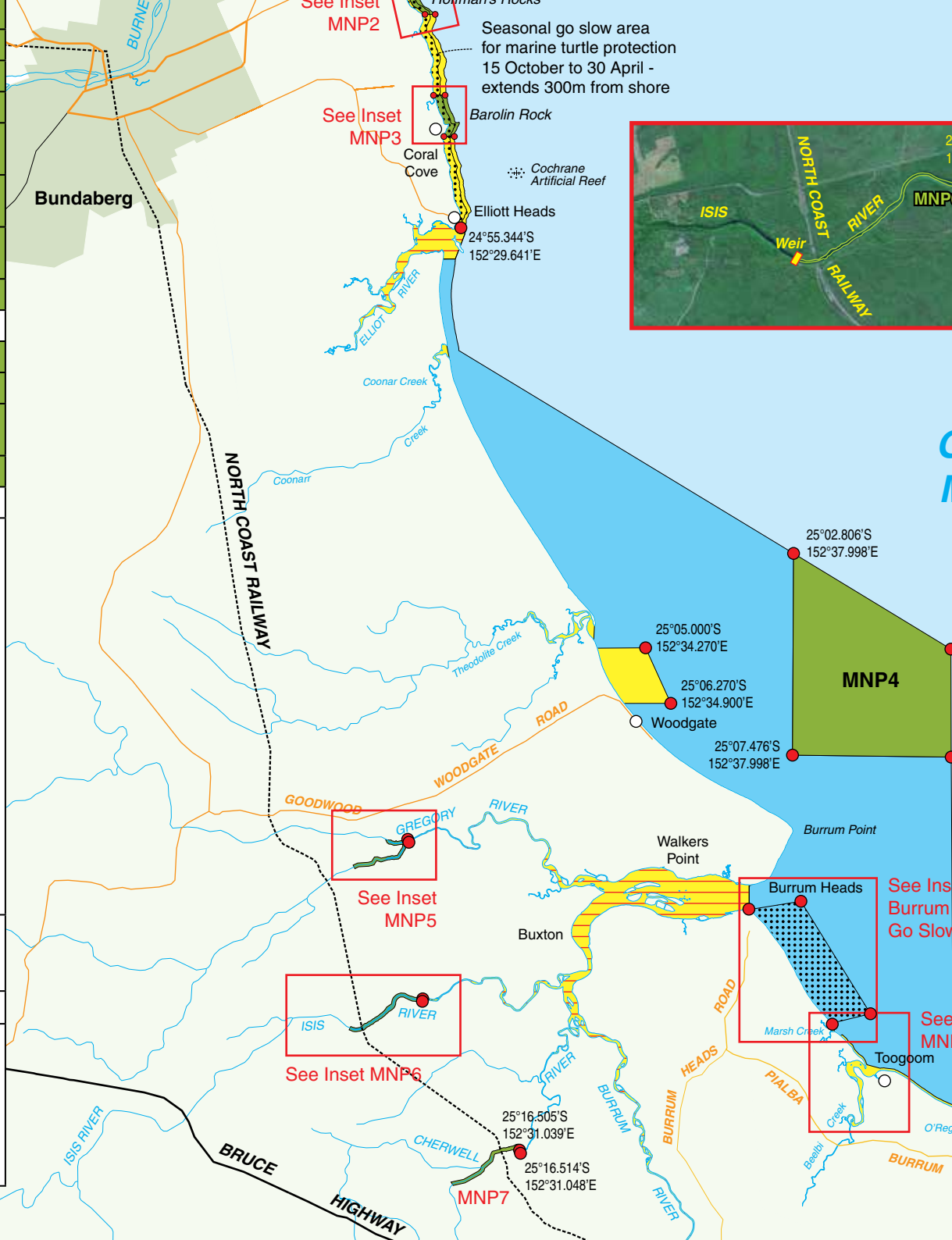
NOTES ON ENTRY AND USE PROVISIONS

- A.** All fishing equipment must be stowed and secured prior to entering a buffer or green zone.
- Other than an accredited harvest fishery.
 - Limited to 4 catch devices (e.g. crab pots or dillies) per person.
 - By hand or hand-held implement.
 - Maximum of 3 lines/rods per person with a combined total of 6 hooks.
 - Limited to 1 line/rod per person and 1 hook/lure per line (except the Great Sandy Area which is as per note 4).
 - Activities that are not “as of right” in the zone, or that involve the take of protected species require either a permit or a Traditional Use of Marine Resources Agreement.
 - Pelagic species only.
 - Commercial fishers holding Department of Primary Industries endorsements can continue commercial fishing activities within the Great Sandy Designated Area.
 - All fishing activities must comply with restrictions or conditions placed upon them by the Fisheries Act and Regulation.

Note: Permits are required for most other activities not listed above. Designated Areas may provide additional restrictions at some locations. The zoning plan does not affect the operation of s.2.11 of the Native Title Act 1993.

DESIGNATED AREAS—Two of nine designated areas shown.

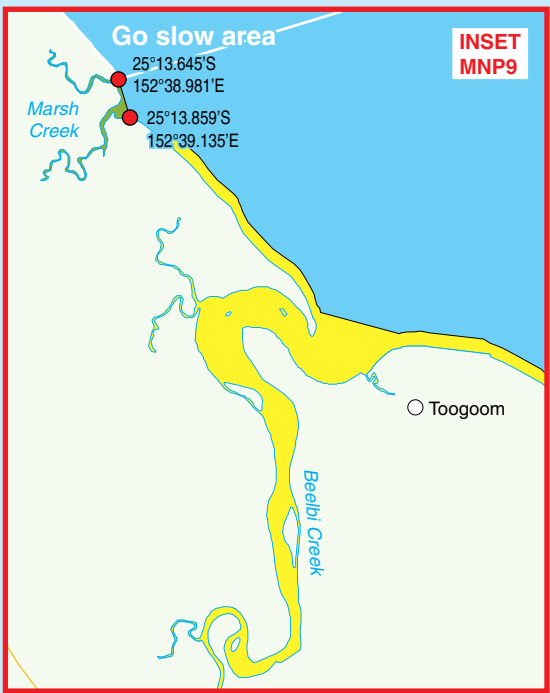
-  The **Great Sandy Area** recognises the importance of recreational fishing by allowing for recreational fishing using 3 lines/rods per person with a combination of 6 hooks. (See Note 9)
-  The **Go Slow Area** aim is to protect turtles and dugong from boat strike, especially in critical feeding and resting areas. When a vessel is operating within a “go slow area” it must be “off the plane” (i.e. at a reduced speed) unless within navigational channels or defined transit lanes.



GREAT SANDY MARINE PARK



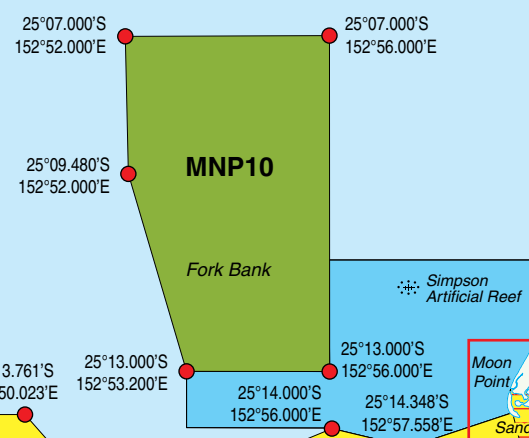
Twenty-five Fathom Hole
 24°55.000'S 152°48.000'E



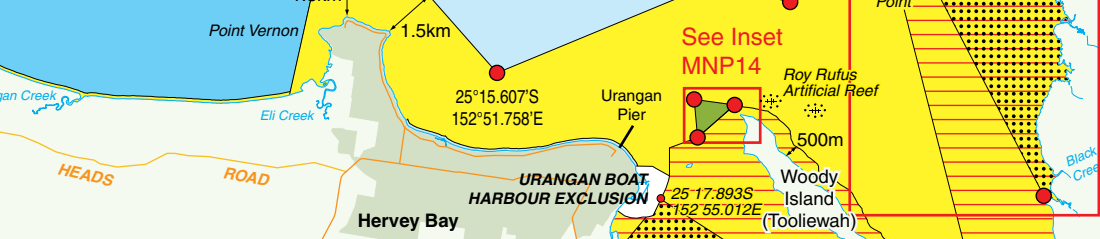
WARNING:
THIS MAP IS NOT TO BE USED FOR MARINE NAVIGATION.
 All users should refer to navigational information available from comprehensive hydrographical charts.



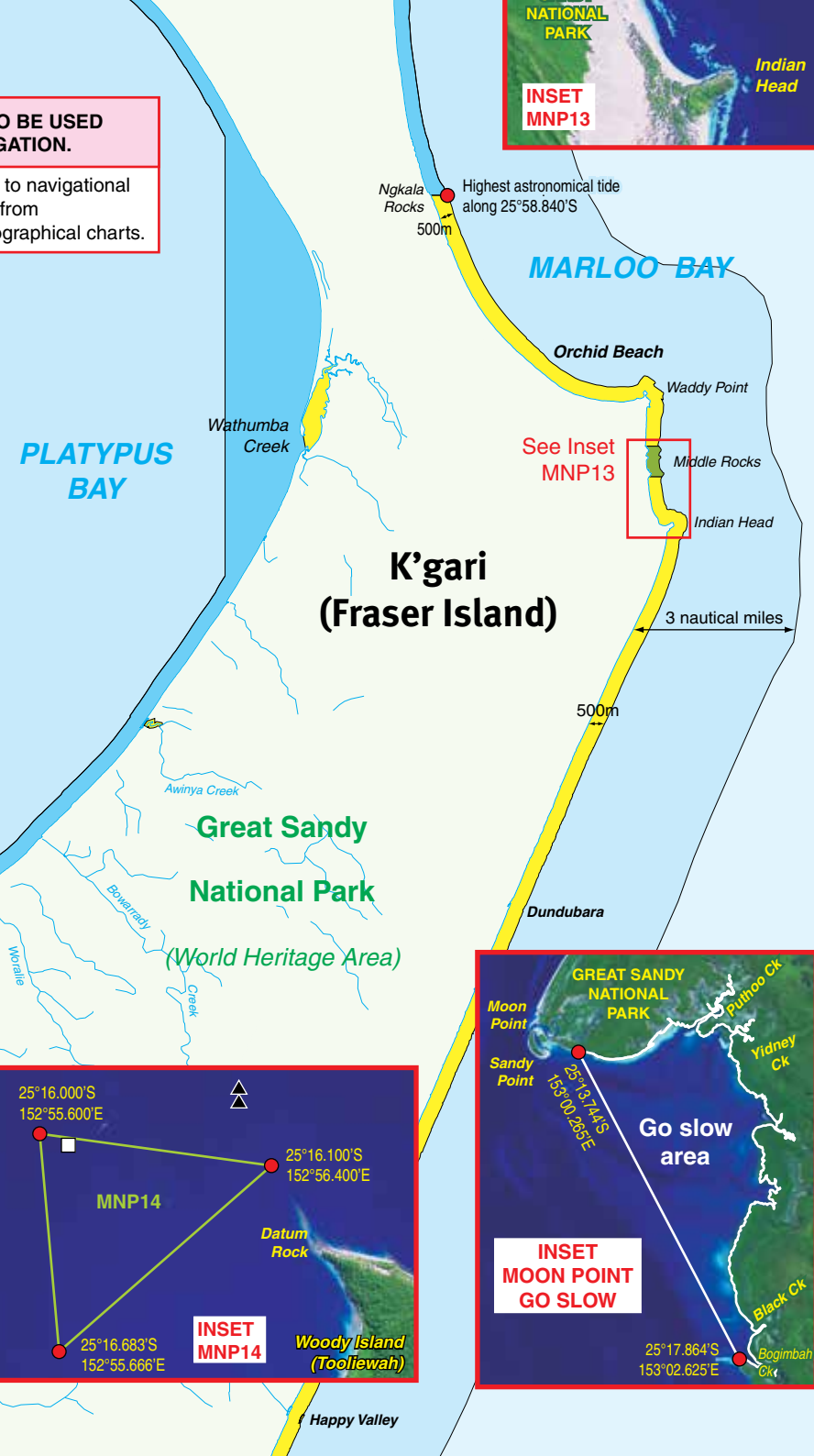
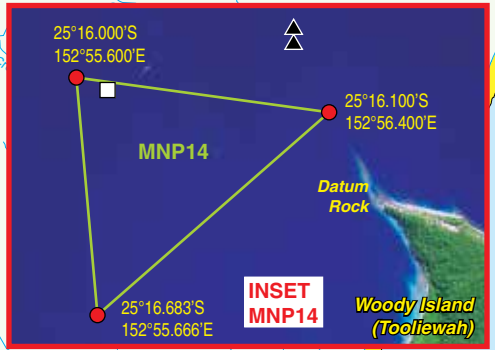
25°04.999'S 152°42.000'E
 25°07.476'S 152°42.000'E



Inset MNP9



See Inset Moon Point Go Slow



et Heads
v

HEADS ROAD

URANGAN BOAT HARBOUR EXCLUSION

Happy Valley