

Regulatory notice

Activities prohibited



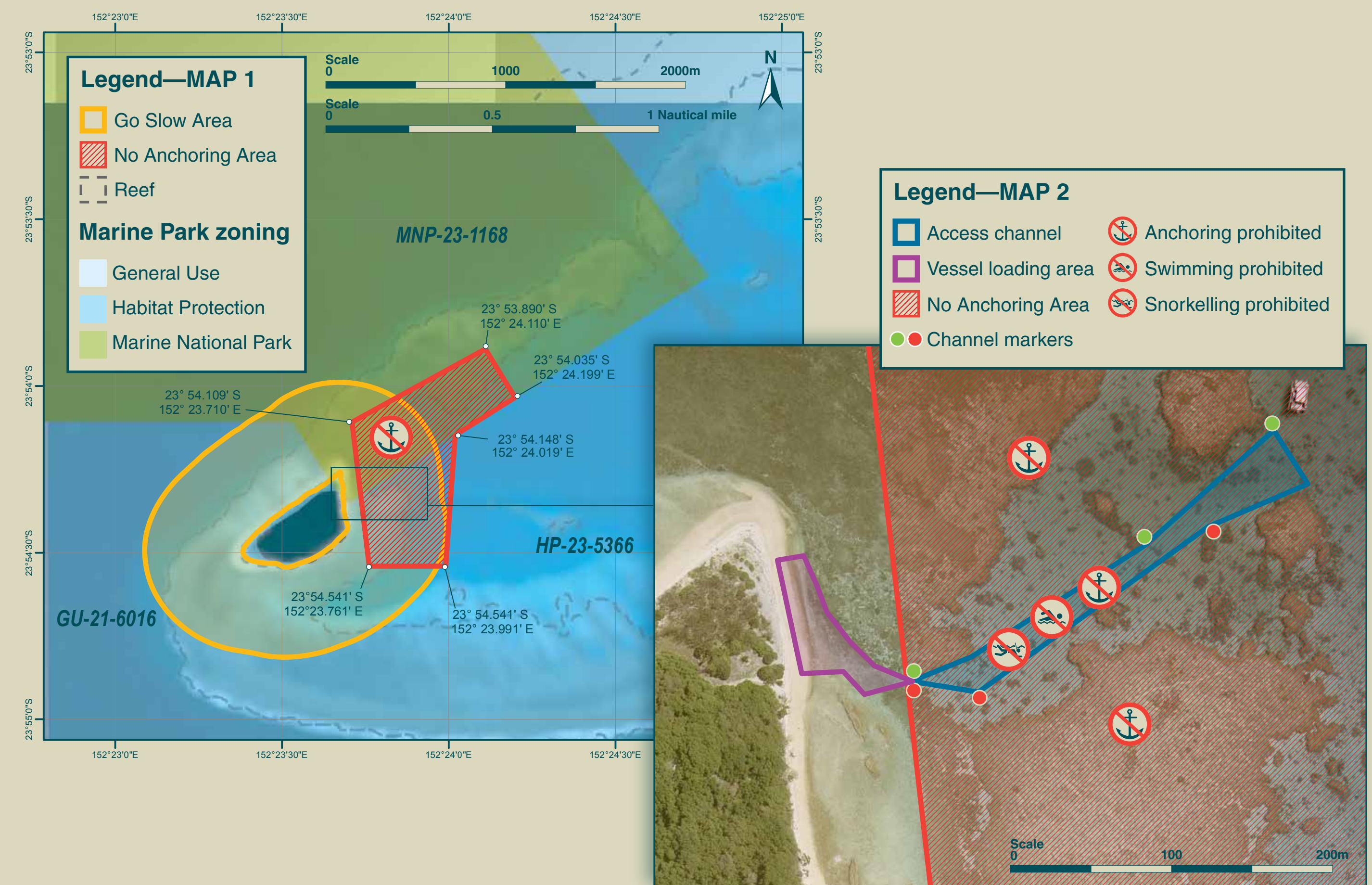
For public safety and protection of natural and cultural resources on Lady Musgrave Island and in the lagoon, **the following activities are prohibited—**

- Operating a vessel at planing speed or at a speed that could reasonably be expected to strike a turtle, in the Go Slow Area (maximum penalty—20 penalty units)
- Anchoring in the No Anchoring Area (maximum penalty—20 penalty units)
- Anchoring in the access channel (maximum penalty—20 penalty units)
- Swimming or snorkelling in the access channel (maximum penalty—50 penalty units)
- Lighting a fire on the island, beach or in the lagoon (maximum penalty—165 penalty units)

MAP 1 shows limits of No Anchoring Area and Go Slow Area

MAP 2 shows limits of the access channel.

Contravention of the requirements of this regulatory notice is an offence against the *Marine Parks Act 2004* and *Nature Conservation Act 1992*.



Visitors are reminded that domestic animals are not permitted on the island or beach.