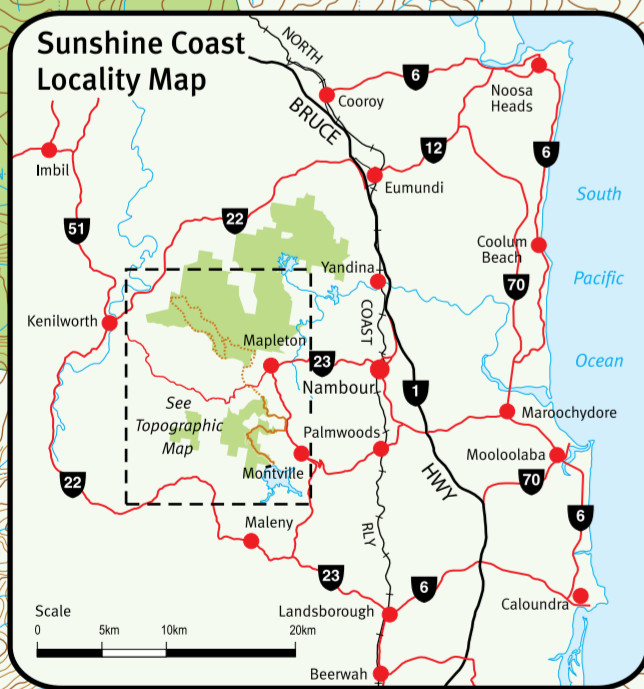
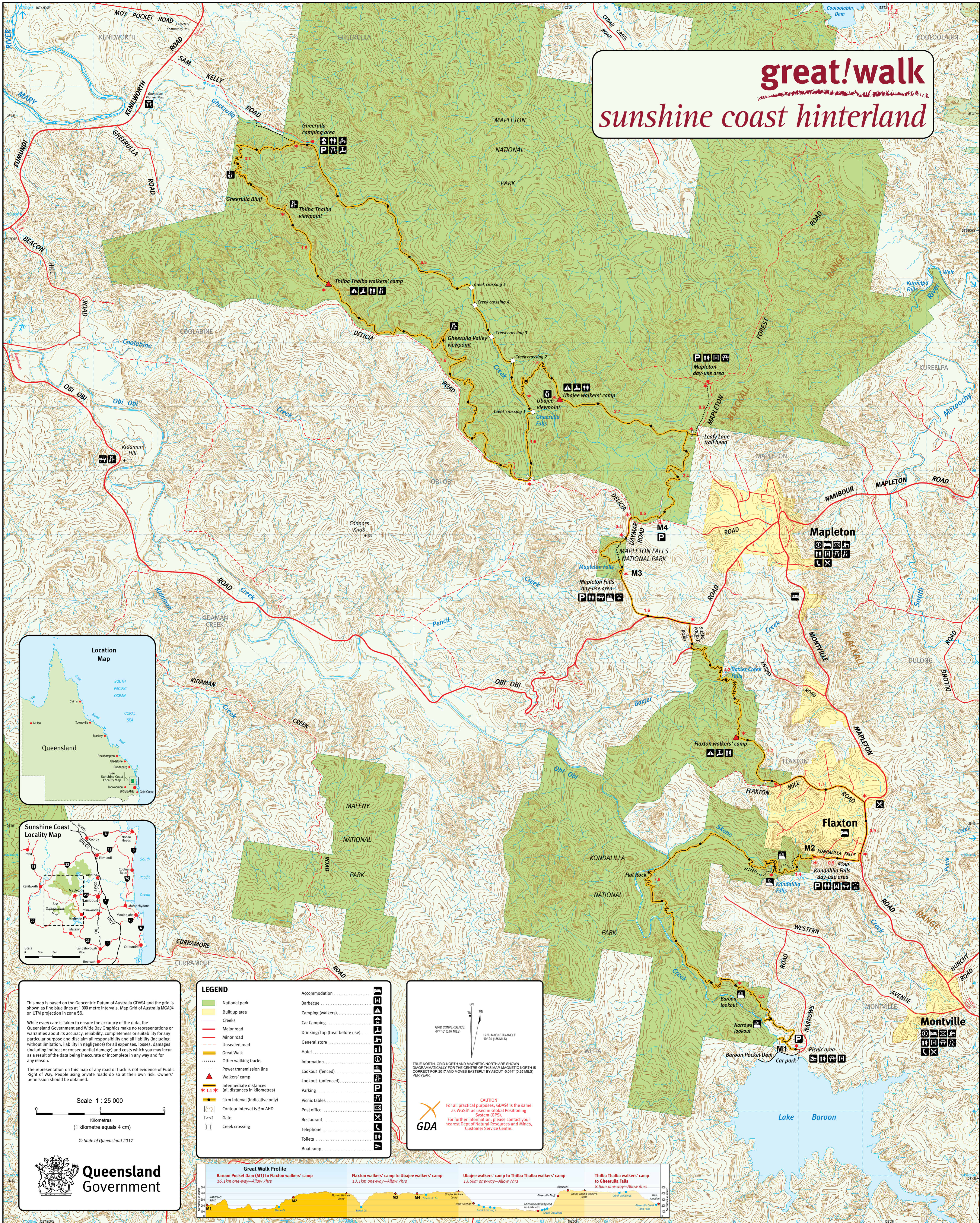


great!walk

sunshine coast hinterland



This map is based on the Geocentric Datum of Australia GDA94 and the grid is shown as fine blue lines at 1 000 metre intervals. Map Grid of Australia MGA94 on UTM projection in zone 56.

While every care is taken to ensure the accuracy of the data, the Queensland Government and Wide Bay Graphics make no representations or warranties about its accuracy, reliability, completeness or suitability for any particular purpose and disclaim all responsibility and all liability (including without limitation, liability in negligence) for all expenses, losses, damages (including indirect or consequential damage) and costs which you may incur as a result of the data being inaccurate or incomplete in any way and for any reason.

The representation on this map of any road or track is not evidence of Public Right of Way. People using private roads do so at their own risk. Owners' permission should be obtained.

Scale 1 : 25 000

0 1 2

Kilometres
(1 kilometre equals 4 cm)

© State of Queensland 2017

LEGEND

	National park		Accommodation
	Built up area		Barbecue
	Creeks		Camping (walkers)
	Major road		Car parking
	Minor road		Drinking/Tap (treat before use)
	Unsealed road		General store
	Great Walk		Hotel
	Other walking tracks		Information
	Power transmission line		Lookout (fenced)
	Walkers' camp		Lookout (unfenced)
	Intermediate distances (all distances in kilometres)		Parking
	1 km interval (indicative only)		Picnic tables
	Contour interval is 5m AHD		Post office
	Gate		Restaurant
	Creek crossing		Telephone
			Toilets
			Boat ramp

