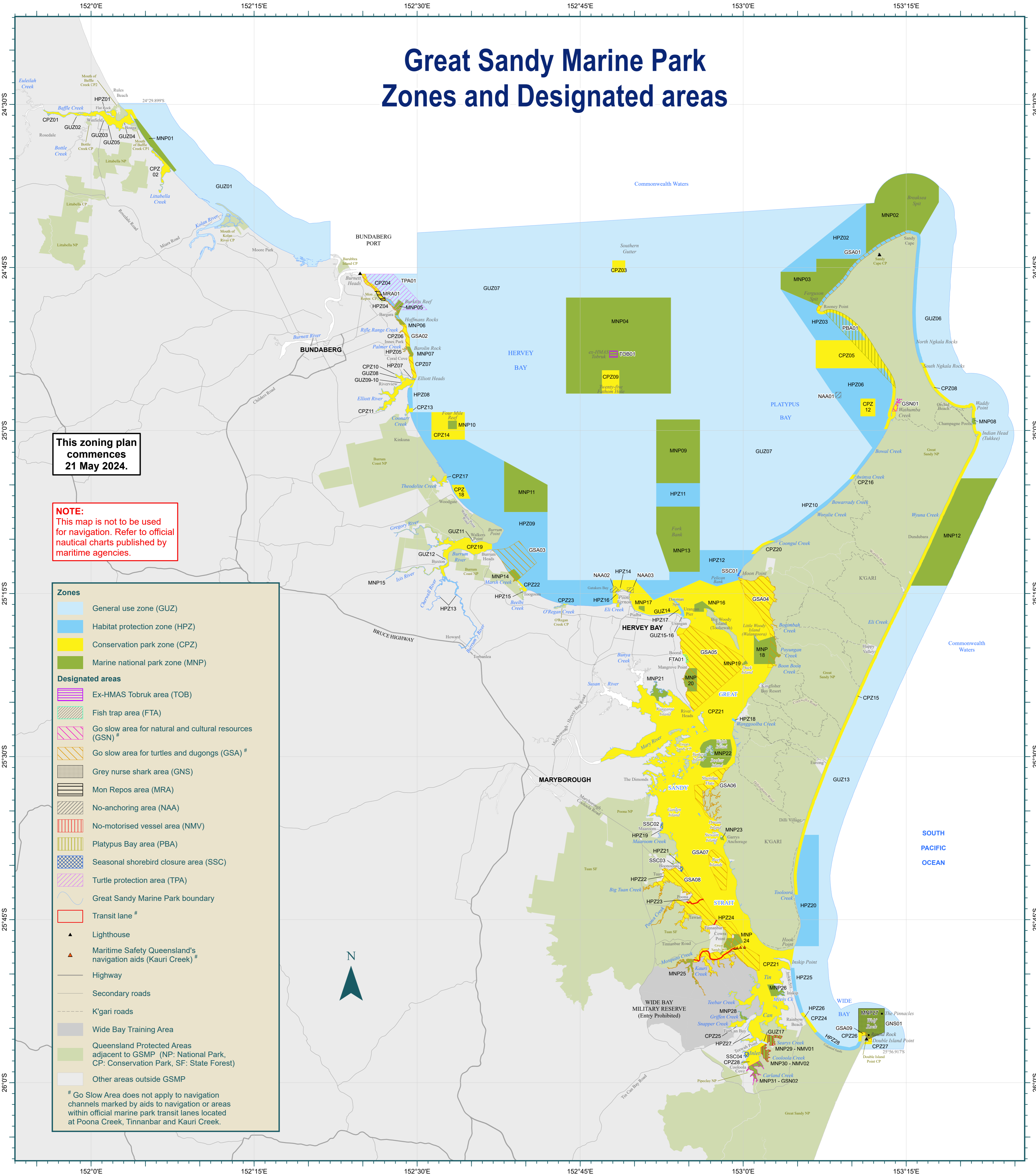


Great Sandy Marine Park Zones and Designated areas



This zoning plan commences 21 May 2024.

NOTE:
This map is not to be used for navigation. Refer to official nautical charts published by maritime agencies.

Zones

- General use zone (GUZ)
- Habitat protection zone (HPZ)
- Conservation park zone (CPZ)
- Marine national park zone (MNP)

Designated areas

- Ex-HMAS Tobruk area (TOB)
- Fish trap area (FTA)
- Go slow area for natural and cultural resources (GSN) #
- Go slow area for turtles and dugongs (GSA) #
- Grey nurse shark area (GNS)
- Mon Repos area (MRA)
- No-anchoring area (NAA)
- No-motorised vessel area (NMV)
- Platypus Bay area (PBA)
- Seasonal shorebird closure area (SSC)
- Turtle protection area (TPA)
- Great Sandy Marine Park boundary
- Transit lane #

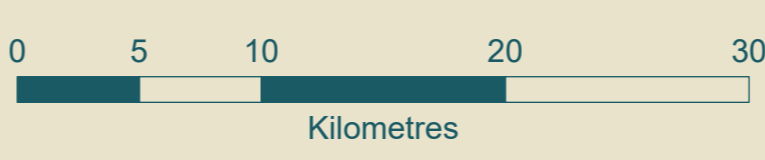
Other symbols:

- Lighthouse
- Maritime Safety Queensland's navigation aids (Kauri Creek) #
- Highway
- Secondary roads
- K'gari roads
- Wide Bay Training Area
- Queensland Protected Areas adjacent to GSMP (NP: National Park, CP: Conservation Park, SF: State Forest)
- Other areas outside GSMP

Go Slow Area does not apply to navigation channels marked by aids to navigation or areas within official marine park transit lanes located at Poona Creek, Tinnabar and Kauri Creek.

DISCLAIMER:
The purpose of this map is to help interpret the Marine Parks (Great Sandy) Zoning Plan 2024. Zone and designated area boundaries are indicative only. Whilst every care has been taken to illustrate boundaries as accurately as possible, users must refer to Schedules 1 and 2 of the Marine Parks (Great Sandy) Zoning Plan 2024 for precise boundary descriptions.

The area of the marine park is described in Schedule 3 of the Marine Parks (Declaration) Regulation 2006.
The Great Sandy Marine Park includes tidal areas determined as Exclusive Use under the Butchulla People Land and Sea Claim #2 Native Title Determination.



1:310,000 when printed at A1

Whilst every care is taken to ensure the accuracy of this product, the Department of Environment, Science and Innovation makes no representation or warranties about its accuracy, reliability, completeness or suitability for any particular purpose. Not to be used for navigation.

The geographic coordinates on this product are expressed in the Geocentric Datum of Australia 2020 as legally defined by the National Measurement (Recognized-Value Standard of Measurement of Position) Determination 2017.

April 2024
Department of Environment, Science and Innovation

© The State of Queensland 2024

