

Daisy Hill Koala Bushland

Action plan

PROJECT UPDATE—JULY 2022



Photo: © Visible Focus

Daisy Hill Koala Bushland

Daisy Hill Koala Bushland, 25 km south of Brisbane, is a core koala habitat area and one of South East Queensland's most significant outdoor recreation hubs. The Koala Bushland features important flora and fauna, the Daisy Hill Koala Centre, recreation trails and day-use facilities.

The Koala Bushland comprises approximately 1,500 ha of protected reserves and habitats in multiple tenures managed by the Department of Environment and Science (through the Queensland Parks and Wildlife Service), Logan City Council and Redland City Council.

Action plan

The Department of Environment and Science is working to improve the management, use and enjoyment of this area, as outlined in the 10-year Daisy Hill Koala Bushland Directions Paper (2017 to 2027).

The vision and direction of the Daisy Hill Koala Bushland was developed with input from a range of stakeholders following extensive planning that considered conservation, recreation and tourism needs and opportunities.

A Daisy Hill Design and Delivery Group has been established to provide advice on the projects to be delivered for stage two of this action plan. The group includes representatives from key Daisy Hill stakeholder groups, including a mountain bike club and trail care group, local and aged care residents, horse riders, bushwalkers and a local bush care group.

The department continues to work with stakeholders, the local community and Traditional Owners on proposed actions in the area.

This action plan details the first two stages of work, and some proposed future actions, to deliver on the vision for this iconic conservation park and community recreation hub.



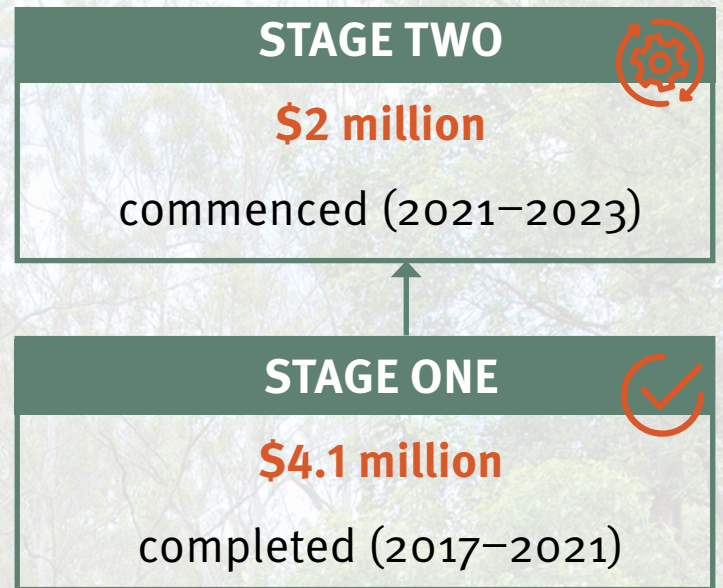
© Queensland Government



Daisy Hill Bushland vision

Daisy Hill Koala Bushland is conserved as a special place of natural value where the community and visitors are immersed in discovery, learning and active healthy enjoyment of nature and its conservation.

Project overview



Further stages to be developed in future.



Stage Two—current projects

Detailed planning is underway on the following projects for delivery between 2022–2023 in the Daisy Hill Conservation Park:

- new barrier-free paths linking the northern and southern sides of the main picnic area
- improved barrier-free access from Dennis Road to the main picnic area
- new horse float parking area and new speed tables around Ring Road
- new mountain bike trails and upgrades to existing mountain bike and walking trails
- new toilet facilities and extra car parks at the Upper Trail hub car park.

Stage One—completed projects

The following projects have been completed in the Daisy Hill Conservation Park:

- upgraded and resurfaced Ring Road
- new seating, a water station, gathering area, warm-up track and mountain-bike service area at the trail hub
- new Disability Discrimination Act compliant tracks, boardwalks, toilet blocks, picnic shelter and tables, car parks and barbecues
- new shelters and electric barbecues for day-use areas
- Paperbark Trail and walking track upgrades to improve accessibility
- new interpretive signage
- new Nature Play areas
- revitalised Daisy Hill Koala Centre
- community projects including revegetation and planting
- sustainable trail planning and work, including a full mountain bike trail audit.

Future actions 2023 >

Further stages will be developed beyond 2023. Future works and partnerships could include:

- exploring opportunities with Traditional Owners to offer services such as performance events, guided walks and storytelling sessions
- introducing new technologies to raise public awareness and understanding of conservation priorities
- further upgrades of multi-use trails, implementing outcomes of trail planning study
- road planning and re-design study and works to address safety issues associated with shared use including pedestrian and vehicular traffic.



Photo: Margrit Sycamore
© Queensland Government

Dennis Road link
– 280m of new paths (barrier free access)

Lower day-use area (southern)
– 320m of new paths (wheel-chair/pram friendly barrier free access)
– new educational signage

Trail Network—Mountain bike and walking track works
– Maintenance of existing mountain bike tracks
– Selected new and upgraded mountain bike trails
– Realignment of the Tree Discovery Trail
– Environmental mitigation/rehabilitation measures including sediment control along watercourses

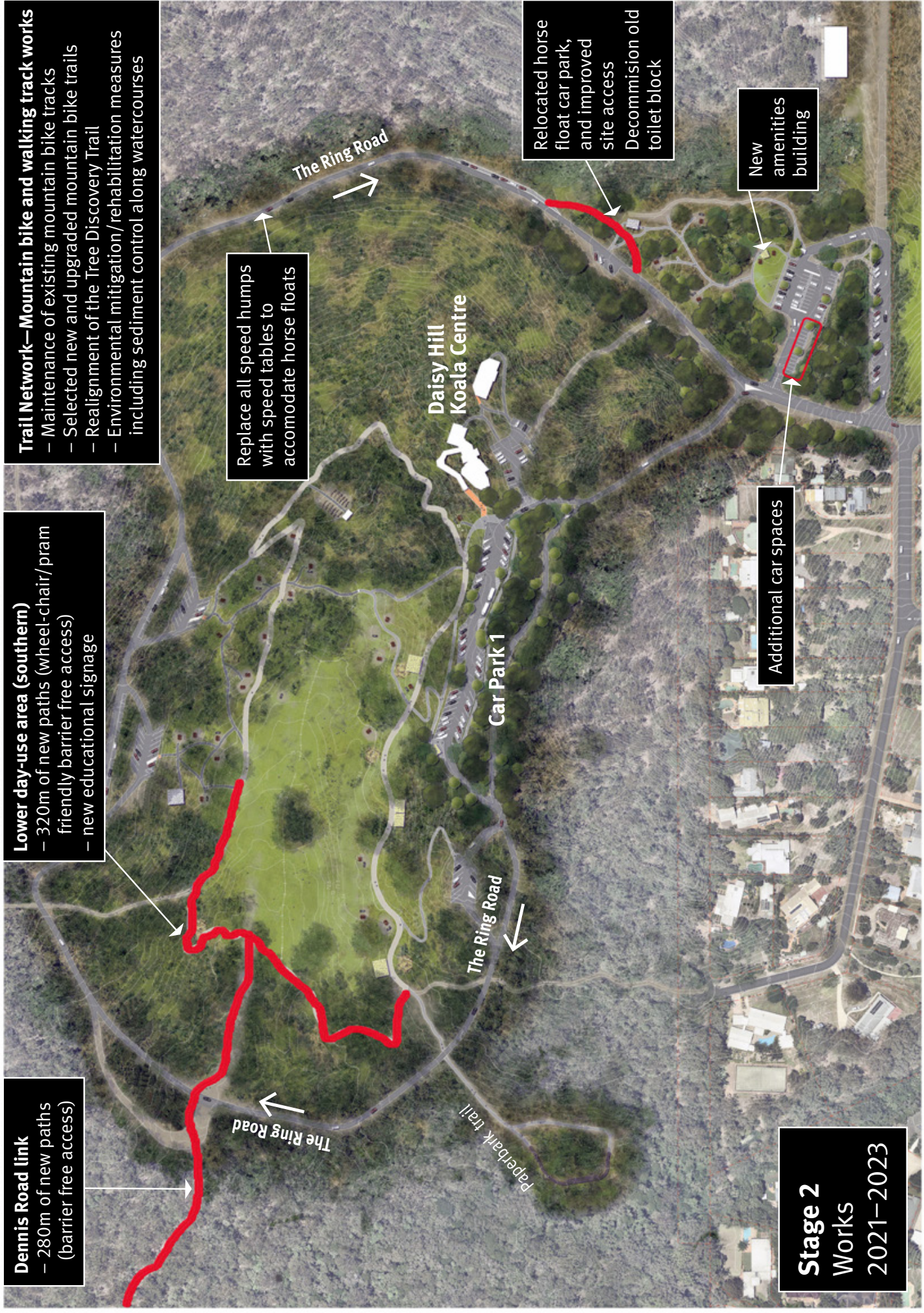
Replace all speed humps with speed tables to accommodate horse floats

Relocated horse float car park, and improved site access
Decommission old toilet block

New amenities building

Additional car spaces

Stage 2 Works 2021–2023



Daisy Hill mountain bike and walking trail network

Map shows indicative alignments of new and upgraded trails to be constructed as part of Stage 2 works

