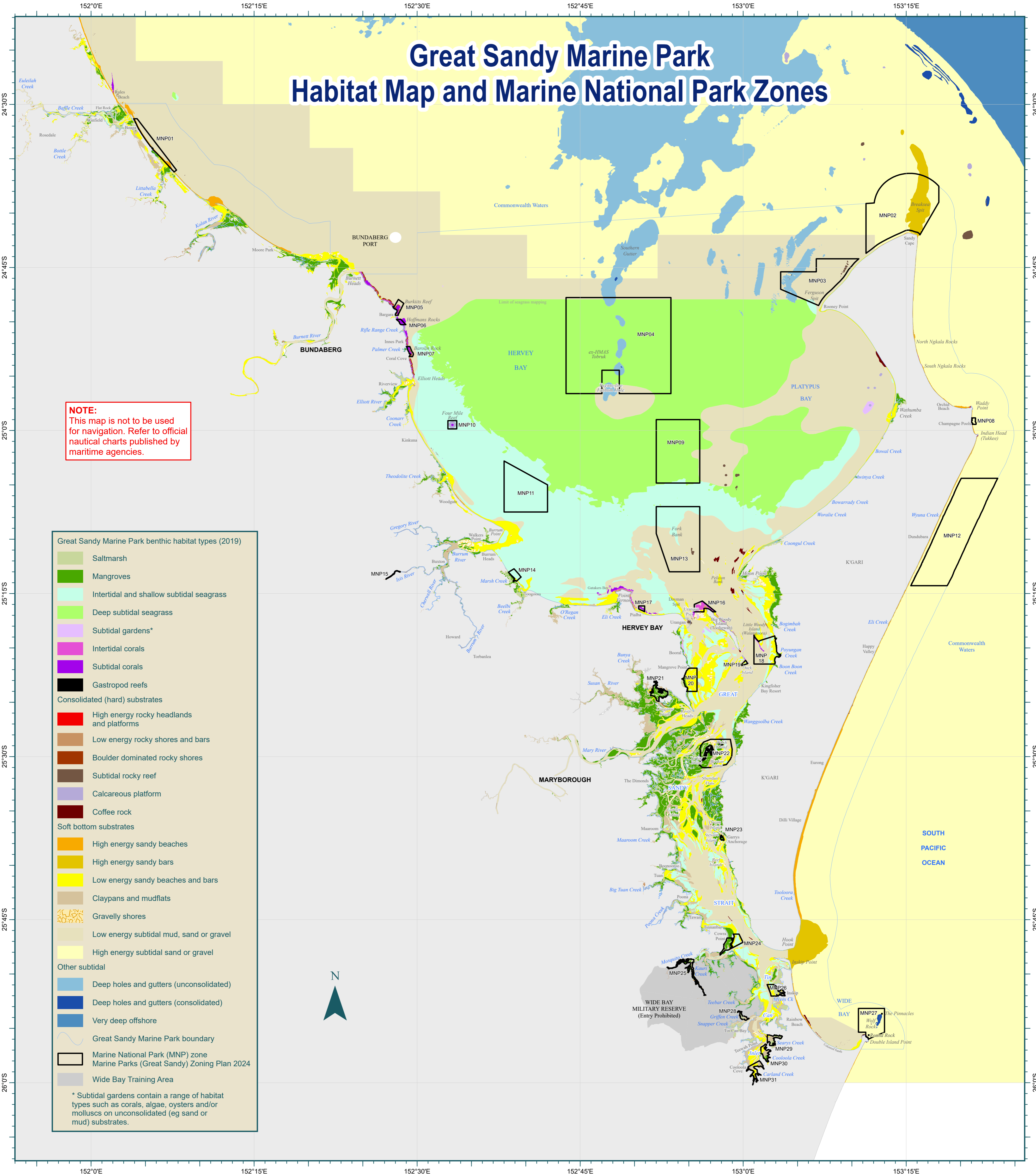


Great Sandy Marine Park Habitat Map and Marine National Park Zones



NOTE:
This map is not to be used for navigation. Refer to official nautical charts published by maritime agencies.

- Great Sandy Marine Park benthic habitat types (2019)**
- Saltmarsh
 - Mangroves
 - Intertidal and shallow subtidal seagrass
 - Deep subtidal seagrass
 - Subtidal gardens*
 - Intertidal corals
 - Subtidal corals
 - Gastropod reefs
- Consolidated (hard) substrates**
- High energy rocky headlands and platforms
 - Low energy rocky shores and bars
 - Boulder dominated rocky shores
 - Subtidal rocky reef
 - Calcareous platform
 - Coffee rock
- Soft bottom substrates**
- High energy sandy beaches
 - High energy sandy bars
 - Low energy sandy beaches and bars
 - Claypans and mudflats
 - Gravelly shores
 - Low energy subtidal mud, sand or gravel
 - High energy subtidal sand or gravel
- Other subtidal**
- Deep holes and gutters (unconsolidated)
 - Deep holes and gutters (consolidated)
 - Very deep offshore
- Great Sandy Marine Park boundary
- Marine National Park (MNP) zone
- Marine Parks (Great Sandy) Zoning Plan 2024
- Wide Bay Training Area
- * Subtidal gardens contain a range of habitat types such as corals, algae, oysters and/or mollusks on unconsolidated (eg sand or mud) substrates.

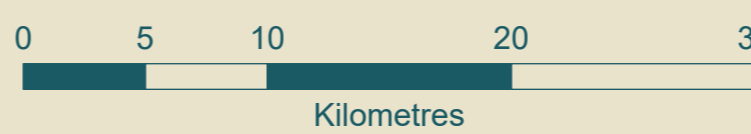
HABITAT NOTES:

The Great Sandy Marine Park benthic habitat types were derived from the "Intertidal and subtidal ecosystem types of Central Queensland, WetlandInfo 2018, Department of Environment, Science and Innovation" for the purposes of marine park management.

DISCLAIMER:

The purpose of this map is to help interpret the *Marine Parks (Great Sandy) Zoning Plan 2024*. Boundaries are indicative only. Whilst every care has been taken to illustrate boundaries as accurately as possible, users must refer to Schedule 1 of the *Marine Parks (Great Sandy) Zoning Plan 2024* and Schedule 3 of the *Marine Parks (Declaration) Regulation 2006* for precise boundary descriptions.

The Great Sandy Marine Park includes tidal areas determined as Exclusive Use under the Butchulla People Land and Sea Claim #2 Native Title Determination.



1:310,000 when printed at A1

Whilst every care is taken to ensure the accuracy of this product, the Department of Environment, Science and Innovation makes no representation or warranties about its accuracy, reliability, completeness or suitability for any particular purpose. Not to be used for navigation.

The geographic coordinates on this product are expressed in the Geocentric Datum of Australia 2020 as legally defined by the National Measurement (Recognized-Value Standard of Measurement of Position) Determination 2017.

April 2024
Department of Environment, Science and Innovation

© The State of Queensland 2024

