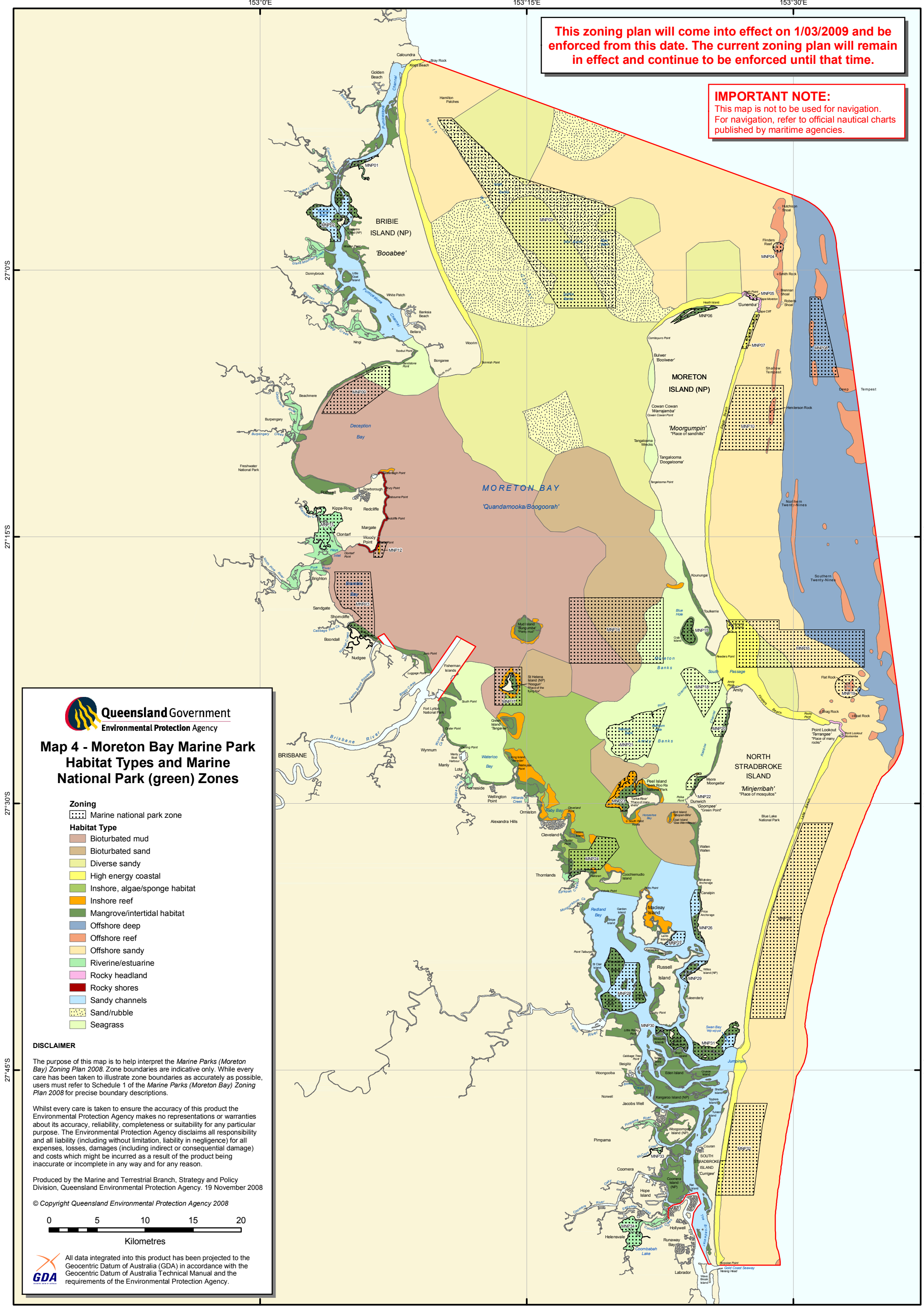


This zoning plan will come into effect on 1/03/2009 and be enforced from this date. The current zoning plan will remain in effect and continue to be enforced until that time.

IMPORTANT NOTE:
This map is not to be used for navigation. For navigation, refer to official nautical charts published by maritime agencies.



Map 4 - Moreton Bay Marine Park Habitat Types and Marine National Park (green) Zones

- Zoning**
- Marine national park zone
- Habitat Type**
- Bioturbated mud
 - Bioturbated sand
 - Diverse sandy
 - High energy coastal
 - Inshore, algae/sponge habitat
 - Inshore reef
 - Mangrove/intertidal habitat
 - Offshore deep
 - Offshore reef
 - Offshore sandy
 - Riverine/estuarine
 - Rocky headland
 - Rocky shores
 - Sandy channels
 - Sand/rubble
 - Seagrass

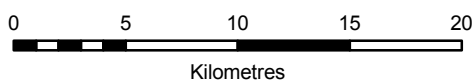
DISCLAIMER

The purpose of this map is to help interpret the Marine Parks (Moreton Bay) Zoning Plan 2008. Zone boundaries are indicative only. While every care has been taken to illustrate zone boundaries as accurately as possible, users must refer to Schedule 1 of the Marine Parks (Moreton Bay) Zoning Plan 2008 for precise boundary descriptions.

Whilst every care is taken to ensure the accuracy of this product the Environmental Protection Agency makes no representations or warranties about its accuracy, reliability, completeness or suitability for any particular purpose. The Environmental Protection Agency disclaims all responsibility and all liability (including without limitation, liability in negligence) for all expenses, losses, damages (including indirect or consequential damage) and costs which might be incurred as a result of the product being inaccurate or incomplete in any way and for any reason.

Produced by the Marine and Terrestrial Branch, Strategy and Policy Division, Queensland Environmental Protection Agency. 19 November 2008

© Copyright Queensland Environmental Protection Agency 2008



All data integrated into this product has been projected to the Geocentric Datum of Australia (GDA) in accordance with the Geocentric Datum of Australia Technical Manual and the requirements of the Environmental Protection Agency.