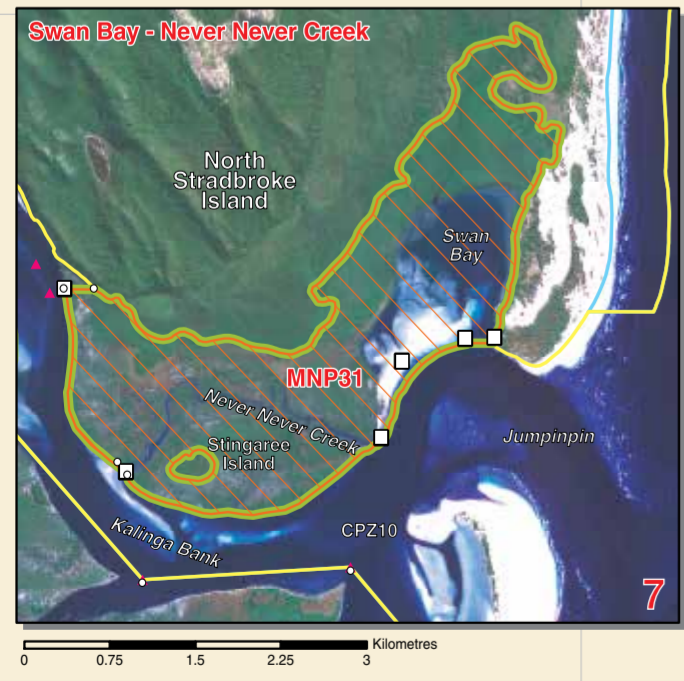
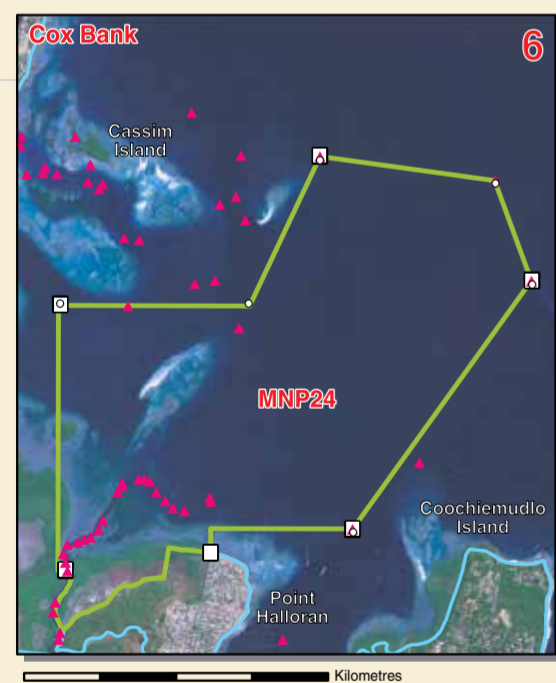
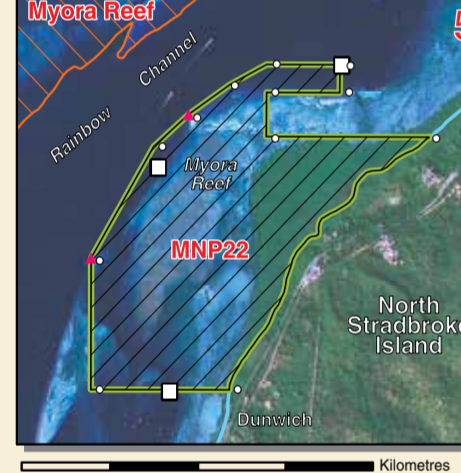
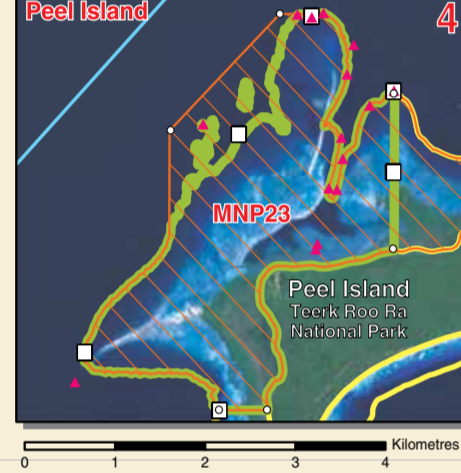
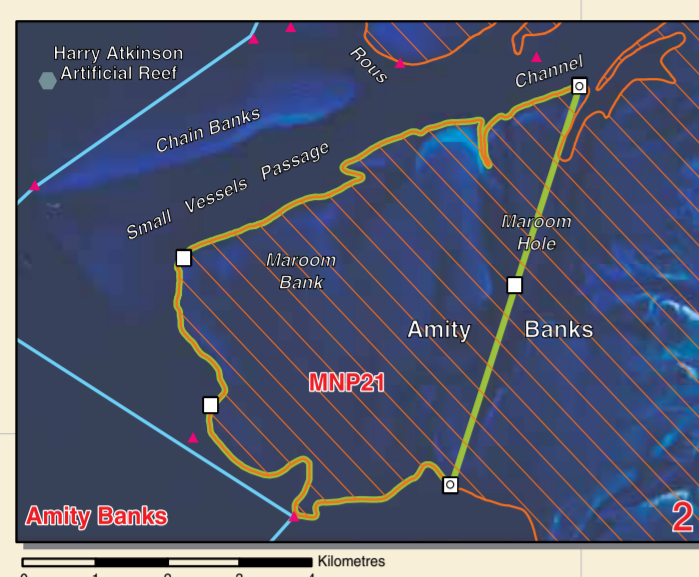
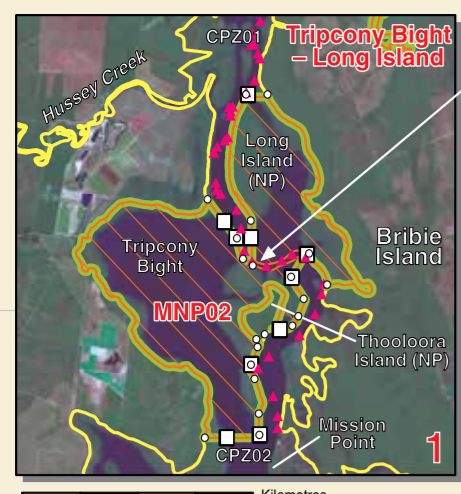
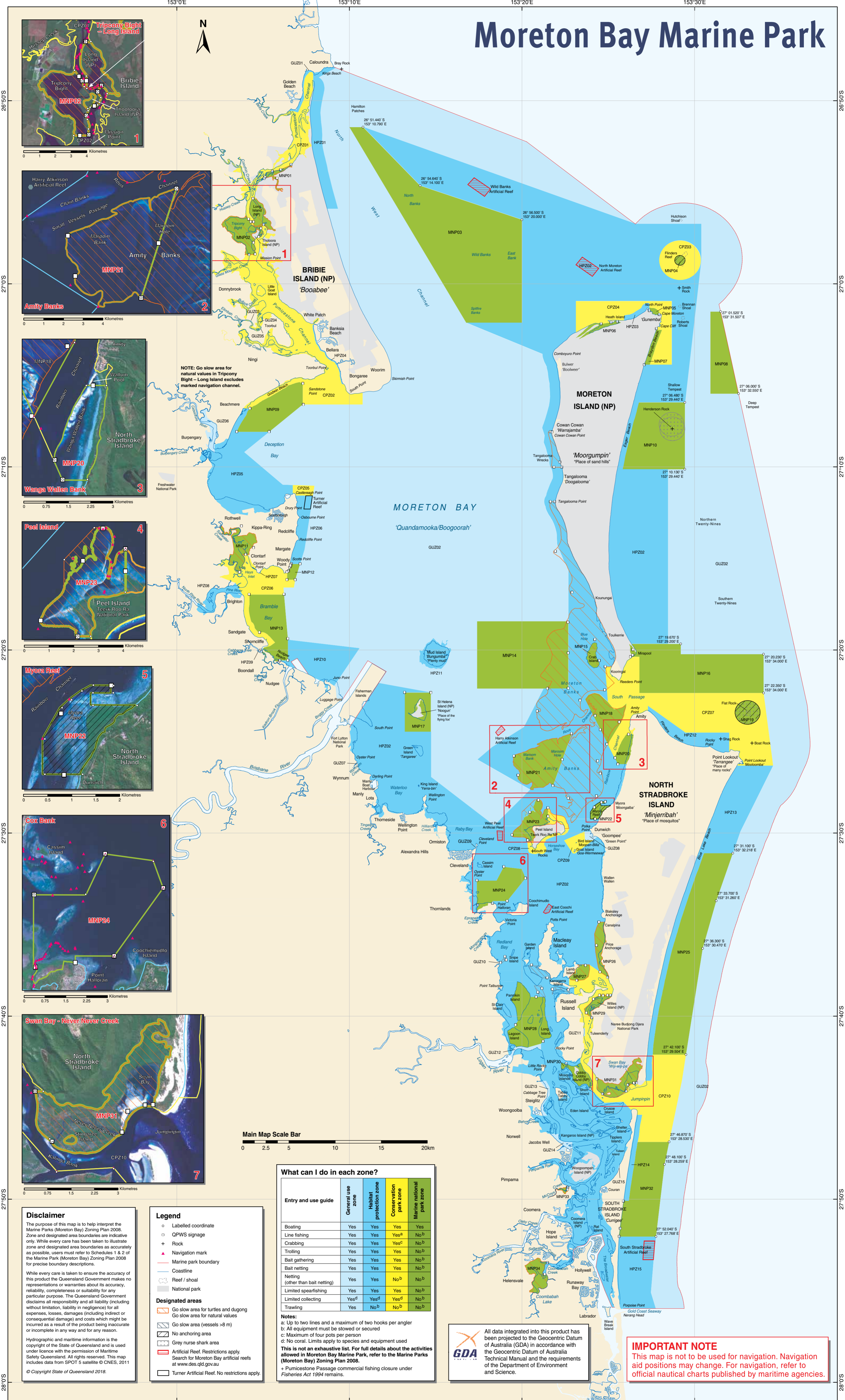
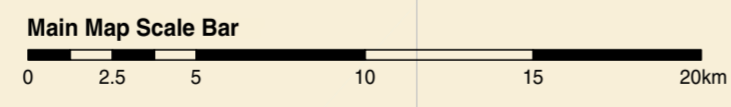


Moreton Bay Marine Park



NOTE: Go slow area for natural values in Tripcoony Bight - Long Island excludes marked navigation channel.



Disclaimer
The purpose of this map is to help interpret the Marine Parks (Moreton Bay) Zoning Plan 2008. Zone and designated area boundaries are indicative only. While every care has been taken to illustrate zone and designated area boundaries as accurately as possible, users must refer to Schedules 1 & 2 of the Marine Park (Moreton Bay) Zoning Plan 2008 for precise boundary descriptions.
While every care is taken to ensure the accuracy of this product the Queensland Government makes no representations or warranties about its accuracy, reliability, completeness or suitability for any particular purpose. The Queensland Government disclaims all responsibility and all liability (including without limitation, liability in negligence) for all expenses, losses, damages (including indirect or consequential damage) and costs which might be incurred as a result of the product being inaccurate or incomplete in any way and for any reason.
Hydrographic and maritime information is the copyright of the State of Queensland and is used under licence with the permission of Maritime Safety Queensland. All rights reserved. This map includes data from SPOT 5 satellite © CNES, 2011
© Copyright State of Queensland 2018.

Legend
○ Labelled coordinate
□ QPWS signage
+ Rock
▲ Navigation mark
— Marine park boundary
— Coastline
○ Reef / shoal
— National park
Designated areas
Go slow area for turtles and dugong
Go slow area for natural values
Go slow area (vessels >8 m)
No anchoring area
Grey nurse shark area
Artificial Reef. Restrictions apply.
Search for Moreton Bay artificial reefs at www.des.qld.gov.au
Turner Artificial Reef. No restrictions apply.

What can I do in each zone?

Entry and use guide	General use zone	Habitat protection zone	Conservation park zone	Marine national park zone
Boating	Yes	Yes	Yes	Yes
Line fishing	Yes	Yes ^a	No ^b	No ^b
Crabbing	Yes	Yes	Yes ^c	No ^b
Trotting	Yes	Yes	Yes	No ^b
Bait gathering	Yes	Yes	Yes	No ^b
Bait netting	Yes	Yes	Yes	No ^b
Netting (other than bait netting)	Yes	Yes	No ^b	No ^b
Limited spearfishing	Yes	Yes	Yes	No ^b
Limited collecting	Yes ^d	Yes ^d	Yes ^d	No ^b
Trawling	Yes	No ^b	No ^b	No ^b

Notes:
a: Up to two lines and a maximum of two hooks per angler
b: All equipment must be stowed or secured
c: Maximum of four pots per person
d: No coral. Limits apply to species and equipment used
This is not an exhaustive list. For full details about the activities allowed in Moreton Bay Marine Park, refer to the Marine Parks (Moreton Bay) Zoning Plan 2008.
+ Pumicestone Passage commercial fishing closure under Fisheries Act 1994 remains.

All data integrated into this product has been projected to the Geocentric Datum of Australia (GDA) in accordance with the Geocentric Datum of Australia Technical Manual and the requirements of the Department of Environment and Science.

IMPORTANT NOTE
This map is not to be used for navigation. Navigation aid positions may change. For navigation, refer to official nautical charts published by maritime agencies.