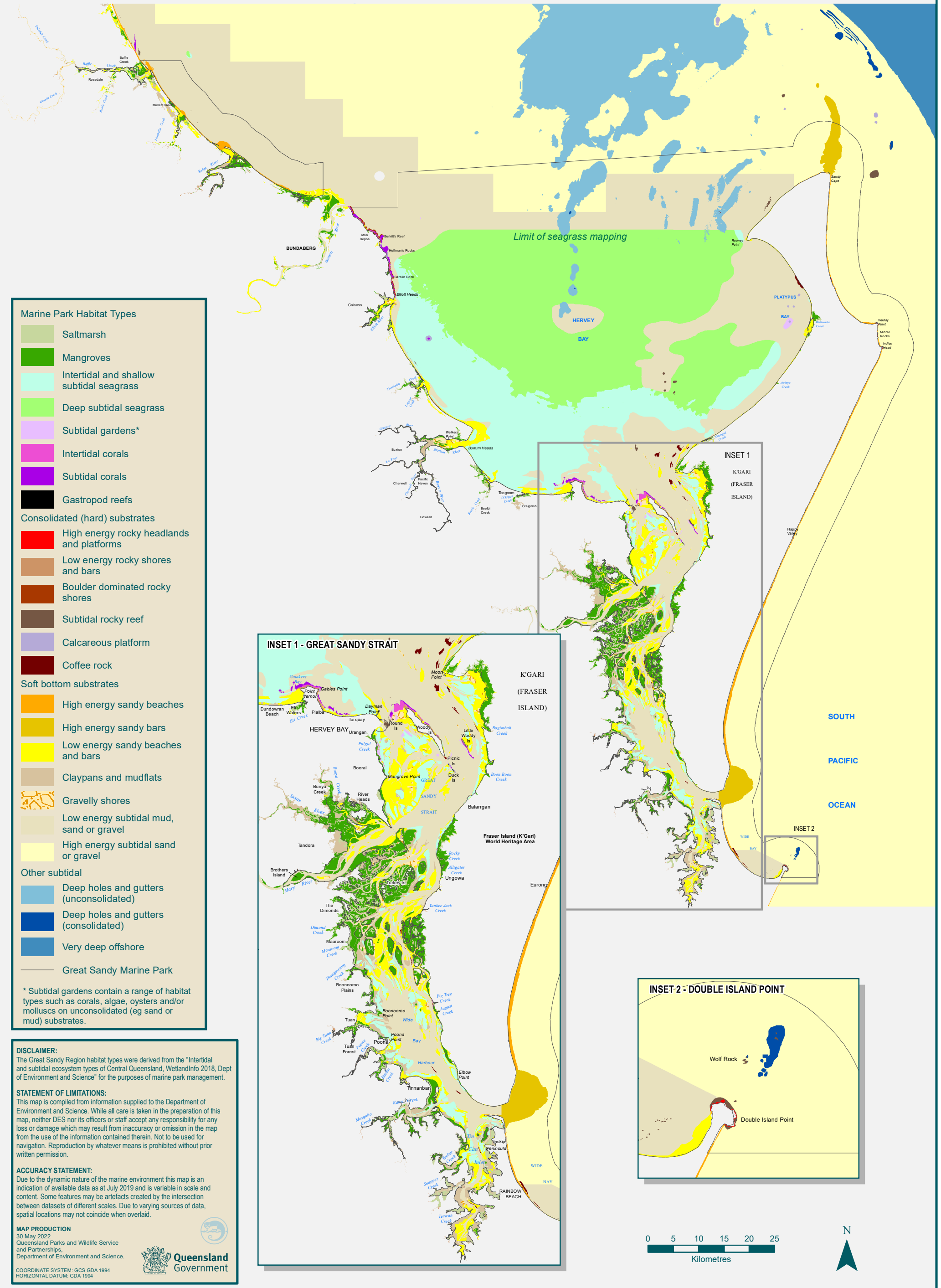


Great Sandy Marine Park - 2019 Benthic Habitat Map



Marine Park Habitat Types

- Saltmarsh
- Mangroves
- Intertidal and shallow subtidal seagrass
- Deep subtidal seagrass
- Subtidal gardens*
- Intertidal corals
- Subtidal corals
- Gastropod reefs

Consolidated (hard) substrates

- High energy rocky headlands and platforms
- Low energy rocky shores and bars
- Boulder dominated rocky shores
- Subtidal rocky reef
- Calcareous platform
- Coffee rock

Soft bottom substrates

- High energy sandy beaches
- High energy sandy bars
- Low energy sandy beaches and bars
- Claypans and mudflats
- Gravelly shores
- Low energy subtidal mud, sand or gravel
- High energy subtidal sand or gravel

Other subtidal

- Deep holes and gutters (unconsolidated)
- Deep holes and gutters (consolidated)
- Very deep offshore

— Great Sandy Marine Park


* Subtidal gardens contain a range of habitat types such as corals, algae, oysters and/or molluscs on unconsolidated (eg sand or mud) substrates.

DISCLAIMER:
The Great Sandy Region habitat types were derived from the "Intertidal and subtidal ecosystem types of Central Queensland, WetlandInfo 2018, Dept of Environment and Science" for the purposes of marine park management.

STATEMENT OF LIMITATIONS:
This map is compiled from information supplied to the Department of Environment and Science. While all care is taken in the preparation of this map, neither DES nor its officers or staff accept any responsibility for any loss or damage which may result from inaccuracy or omission in the map from the use of the information contained therein. Not to be used for navigation. Reproduction by whatever means is prohibited without prior written permission.

ACCURACY STATEMENT:
Due to the dynamic nature of the marine environment this map is an indication of available data as at July 2019 and is variable in scale and content. Some features may be artefacts created by the intersection between datasets of different scales. Due to varying sources of data, spatial locations may not coincide when overlaid.

MAP PRODUCTION
30 May 2022
Queensland Parks and Wildlife Service
and Partnerships,
Department of Environment and Science.

 **Queensland Government**

COORDINATE SYSTEM: GCS GDA 1994
HORIZONTAL DATUM: GDA 1994

